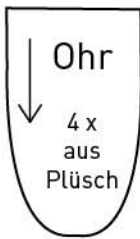
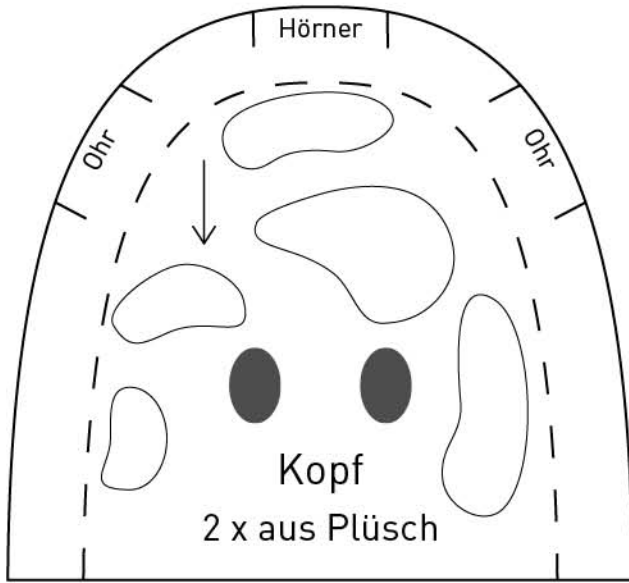


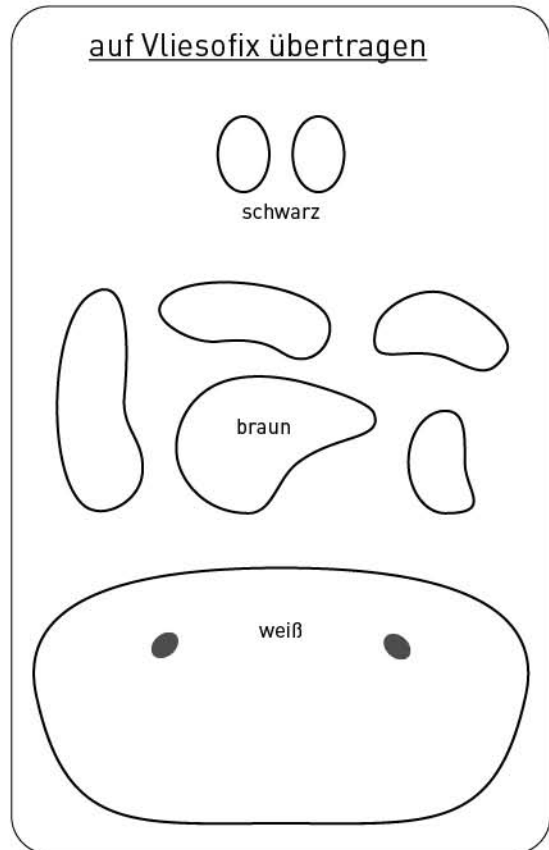
# Giraffenkopf



Für Ohren  
Rechtecke  
ca. 4 cm x 5 cm  
zuschneiden

## Applikationen für Giraffe

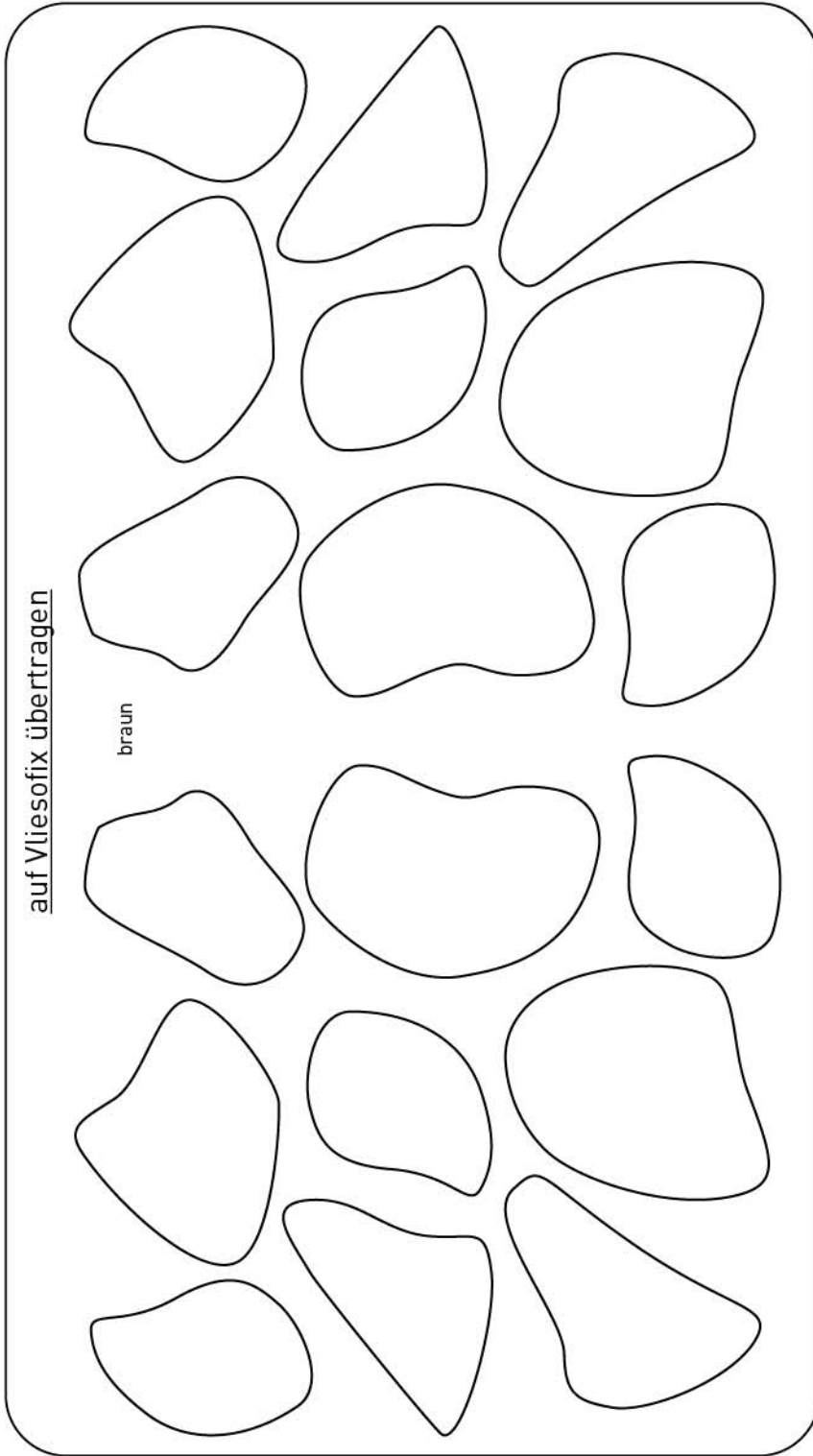
auf Vliesofix übertragen



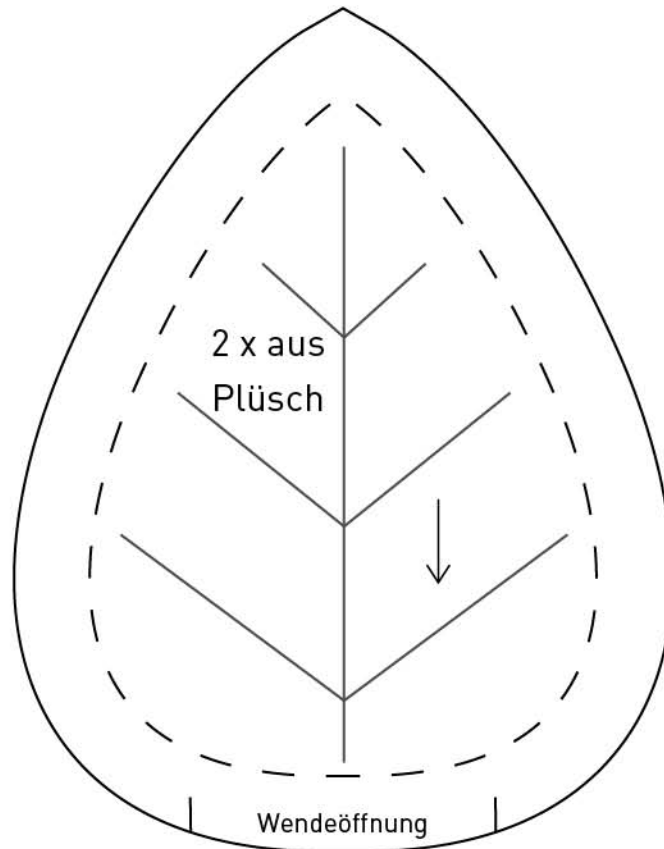
## Applikation Giraffenfell

auf Vliesofix übertragen

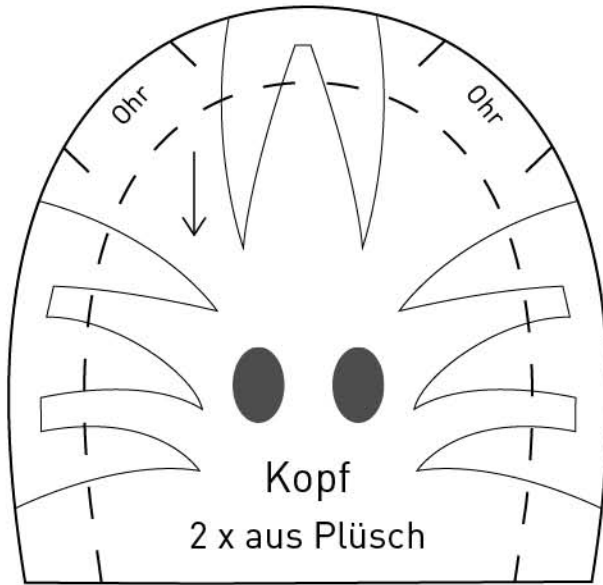
braun



## Blatt

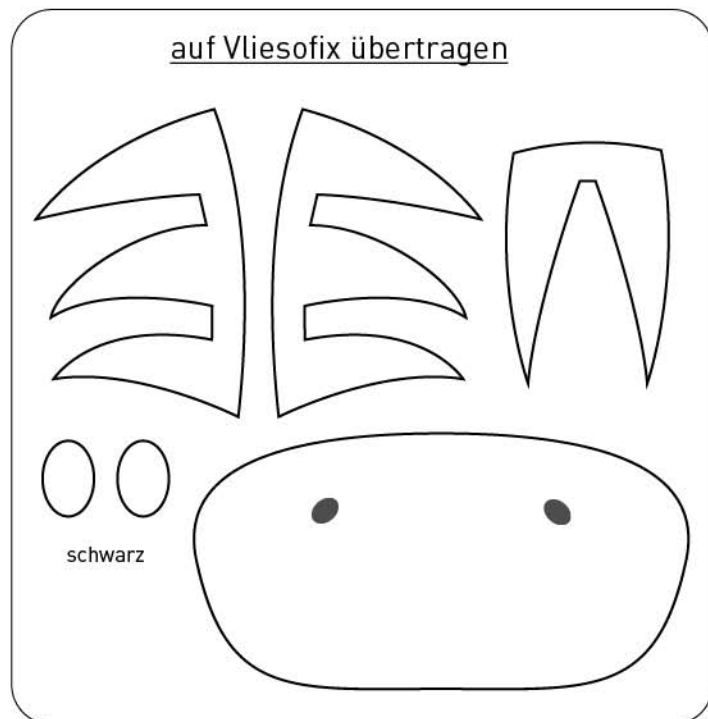


## Zebrakopf



Für Ohren  
Rechtecke  
ca. 4 cm x 5 cm  
zuschneiden

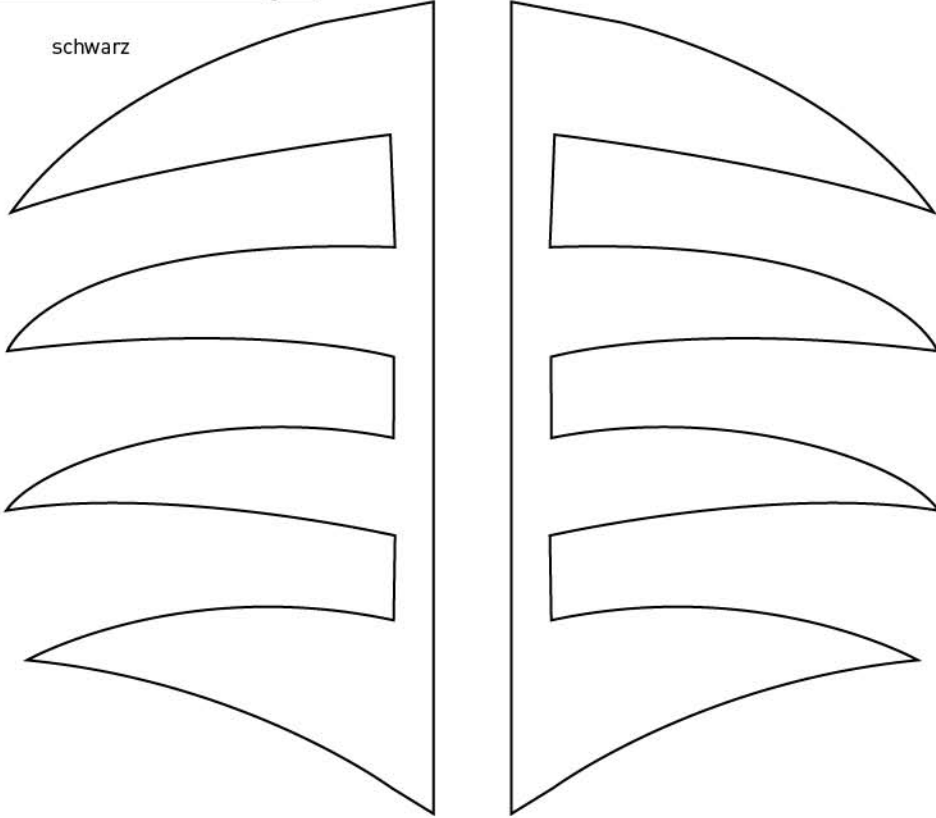
## Applikationen für Zebra



## Applikation Zebrafell

auf Vliesofix übertragen

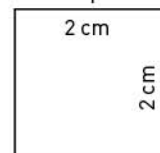
schwarz

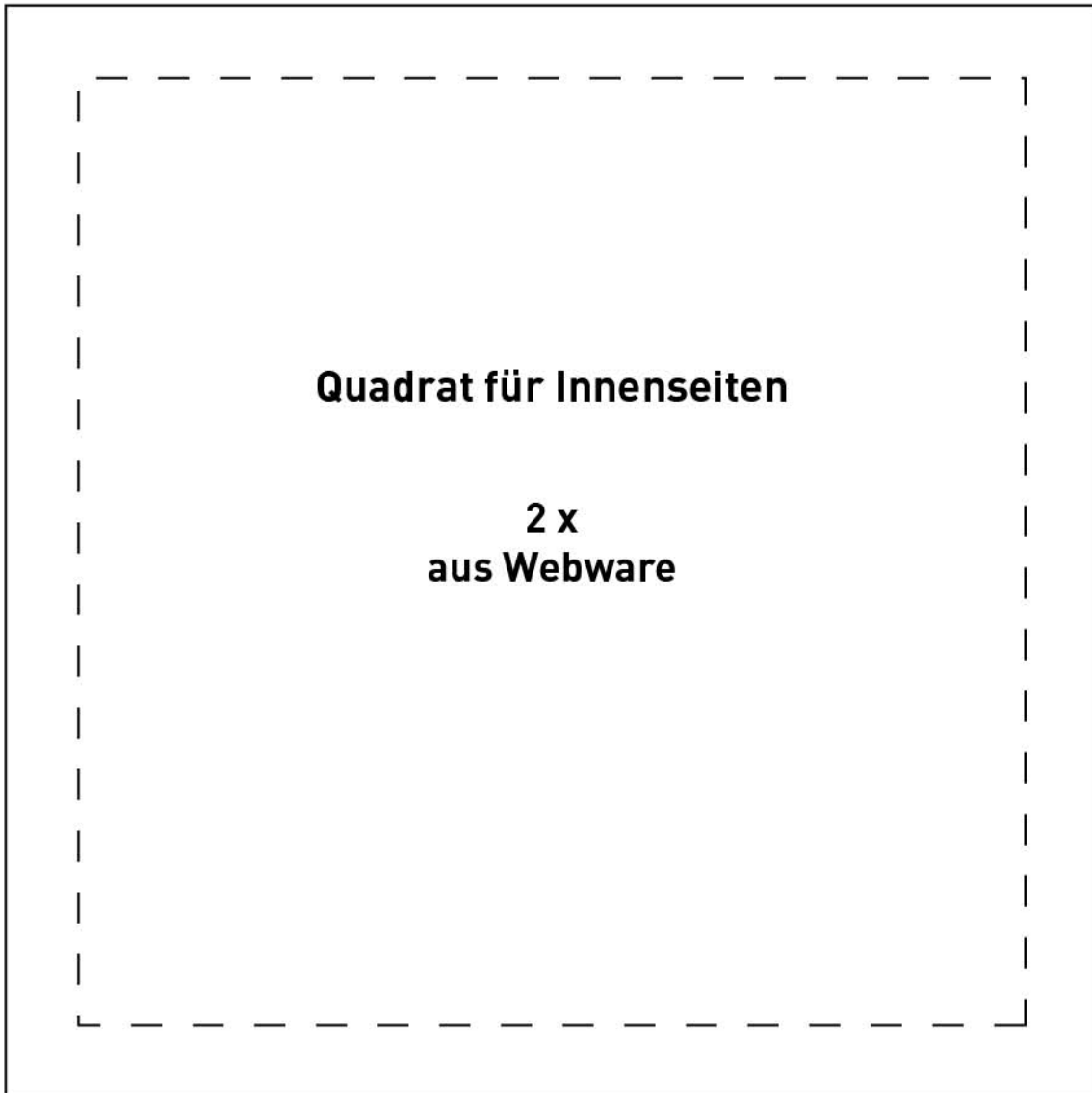


**Quadrat für Außenseiten**

**4 x  
aus Webware**

Kontrollquadrat



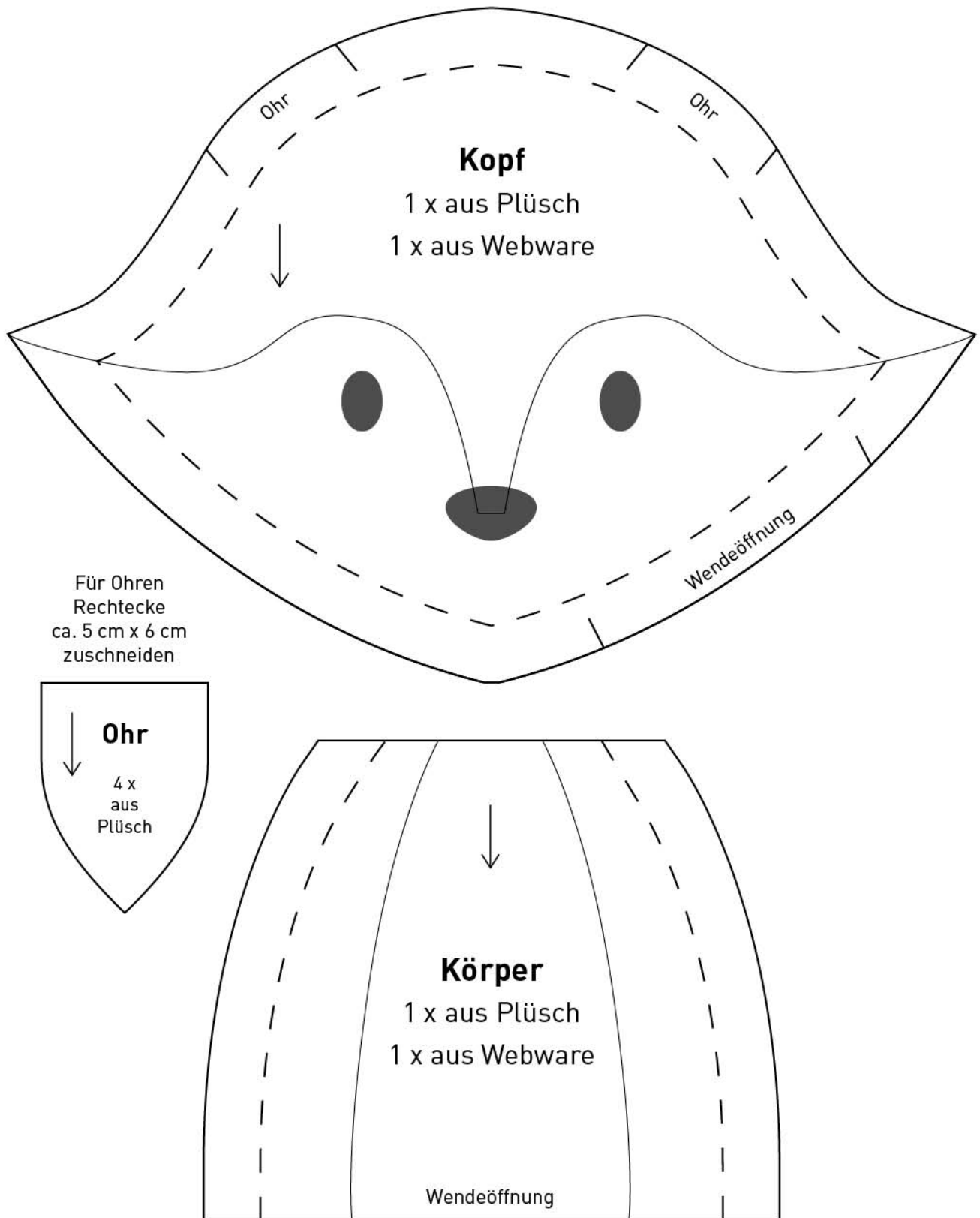


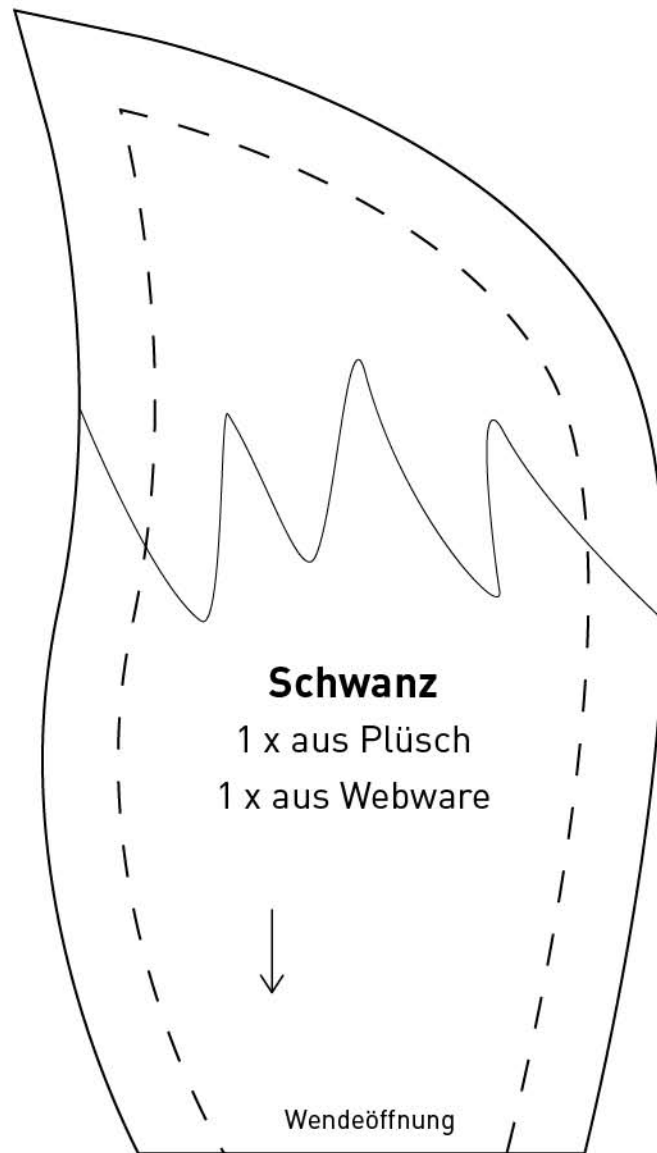


**4 x**  
**aus Volumenvlies H 630**

**2 x  
aus Volumenvlies H 630**

## Fuchs für Außenseite

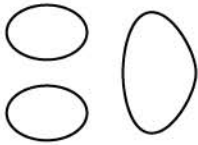




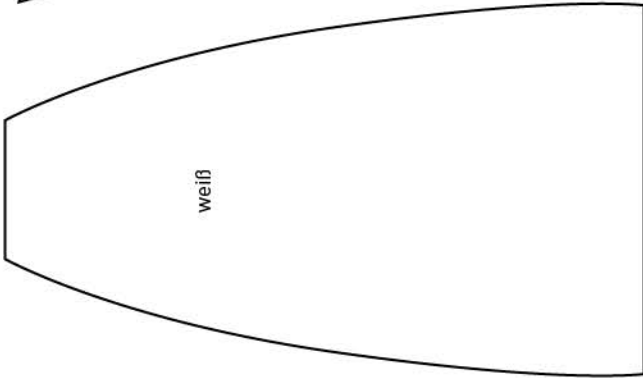
# Applikationen für Fuchs

auf Vliesofix übertragen

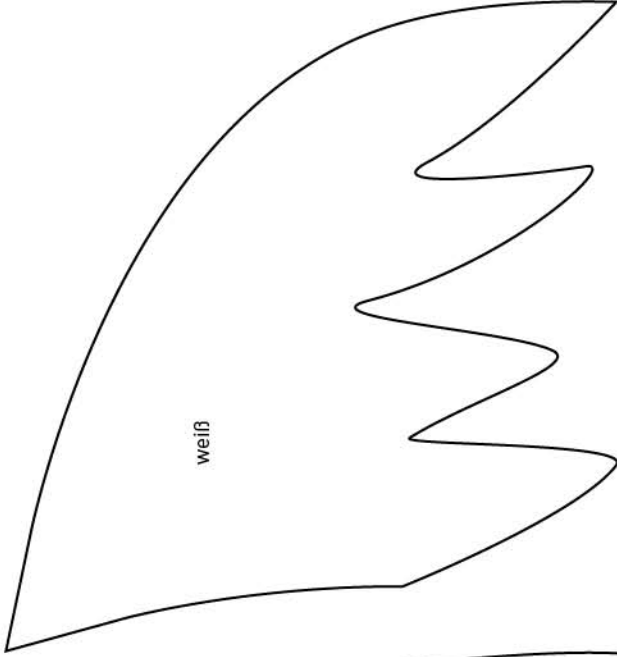
schwarz



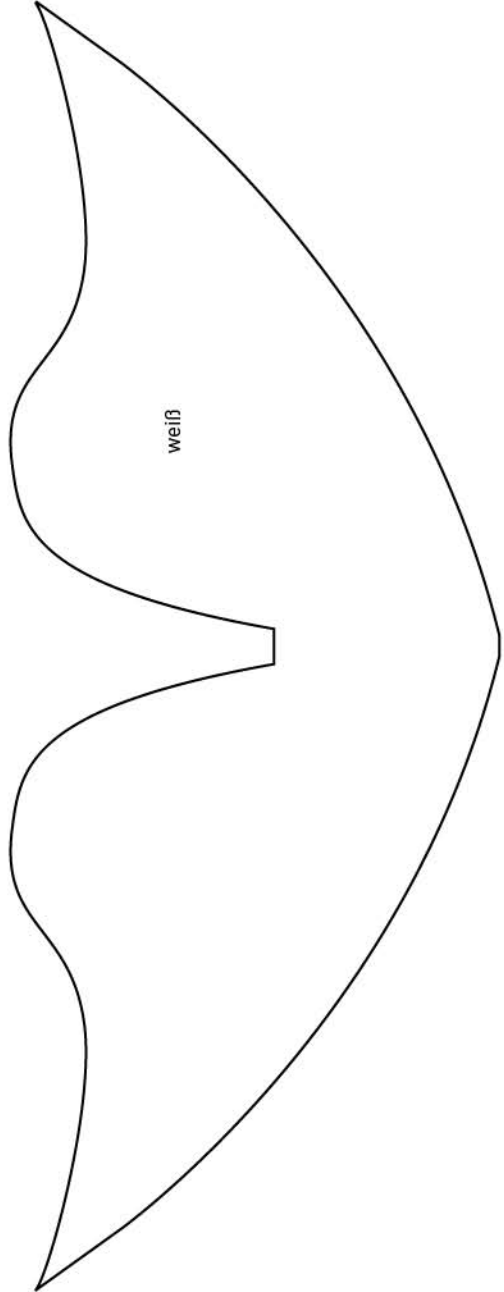
weiß



weiß



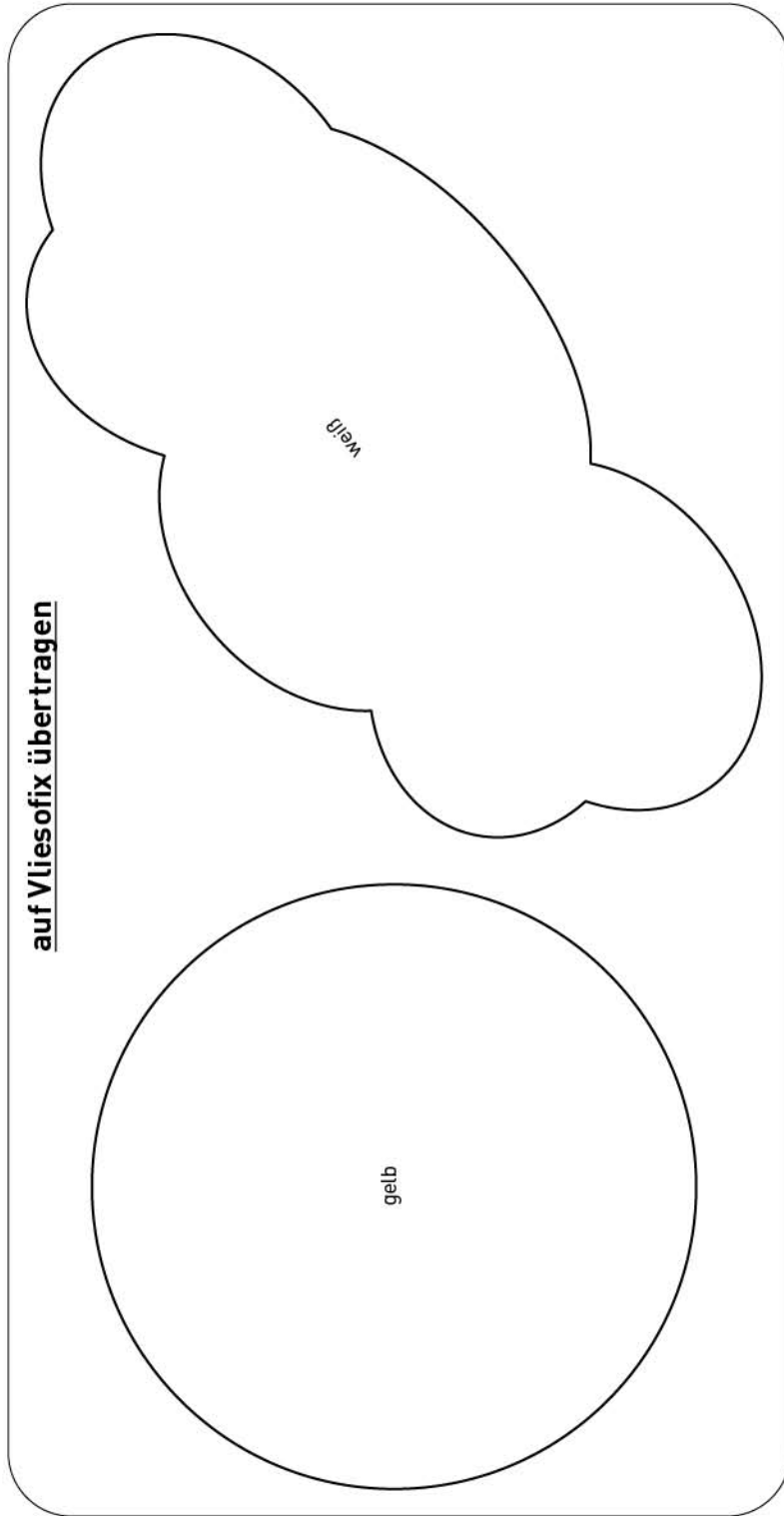
weiß



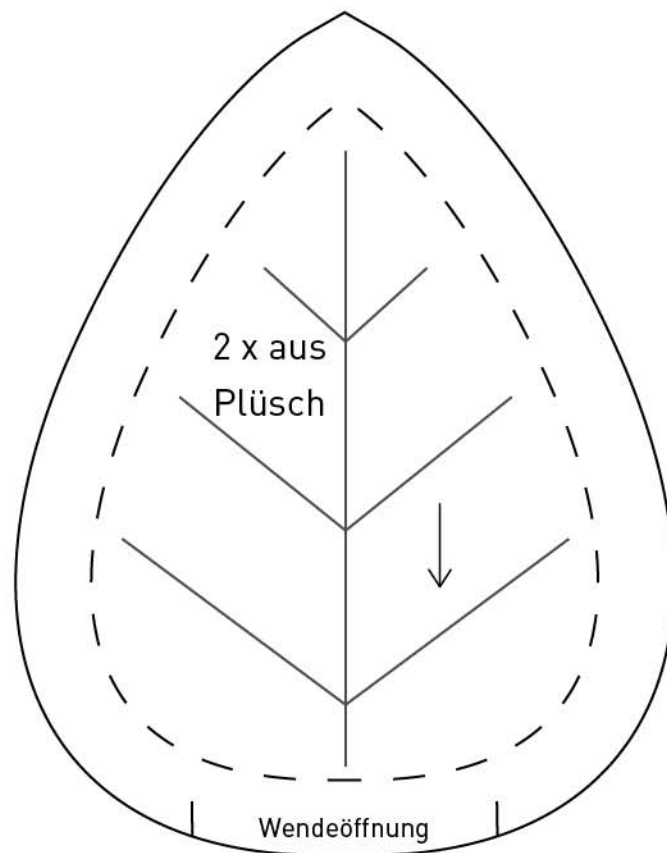
# Sonne, Wolke, Regen

## Applikationen für Sonne und Wolke

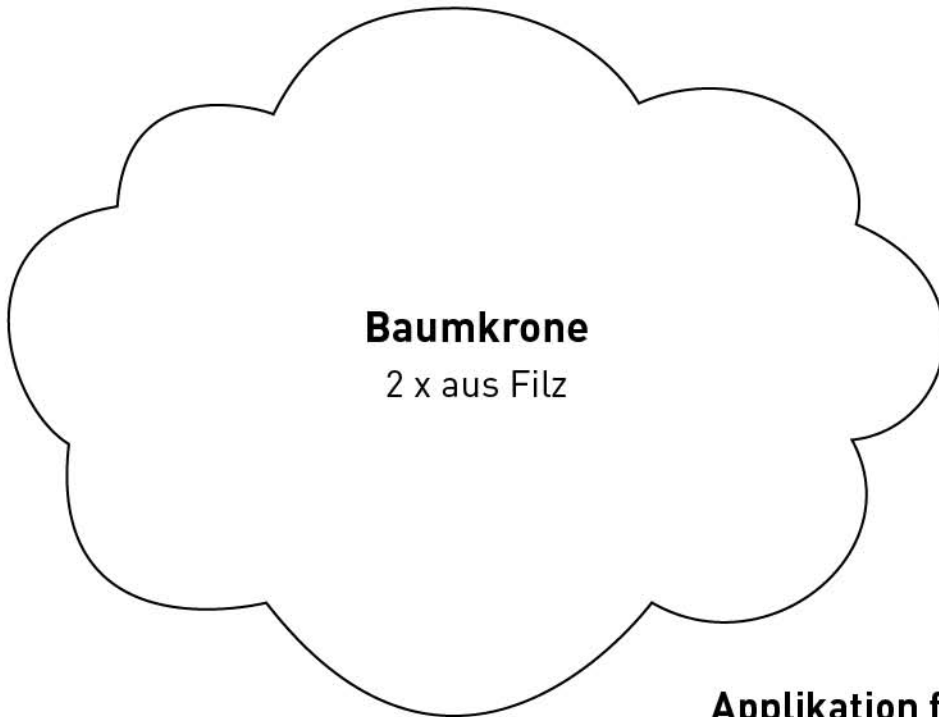
auf Vliesofix übertragen



## Blatt

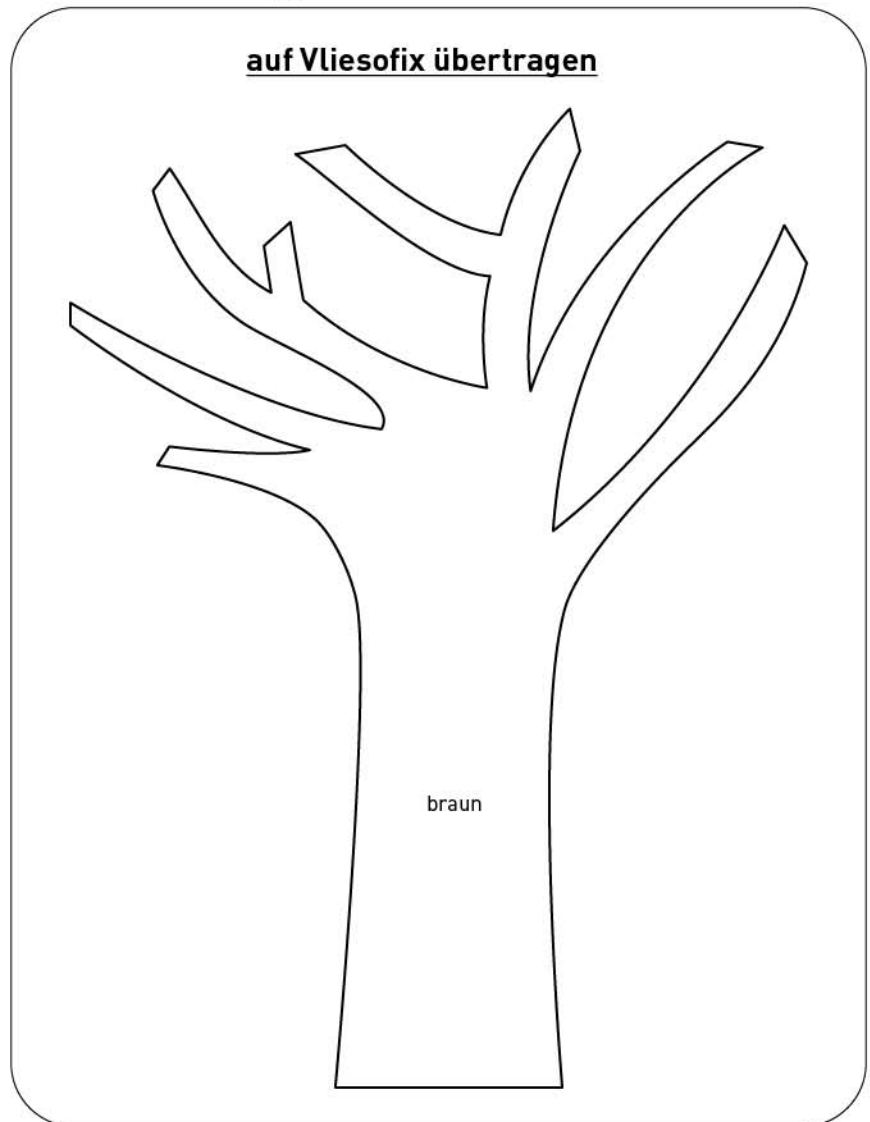


## Baum



### Applikation für Baum

auf Vliesofix übertragen

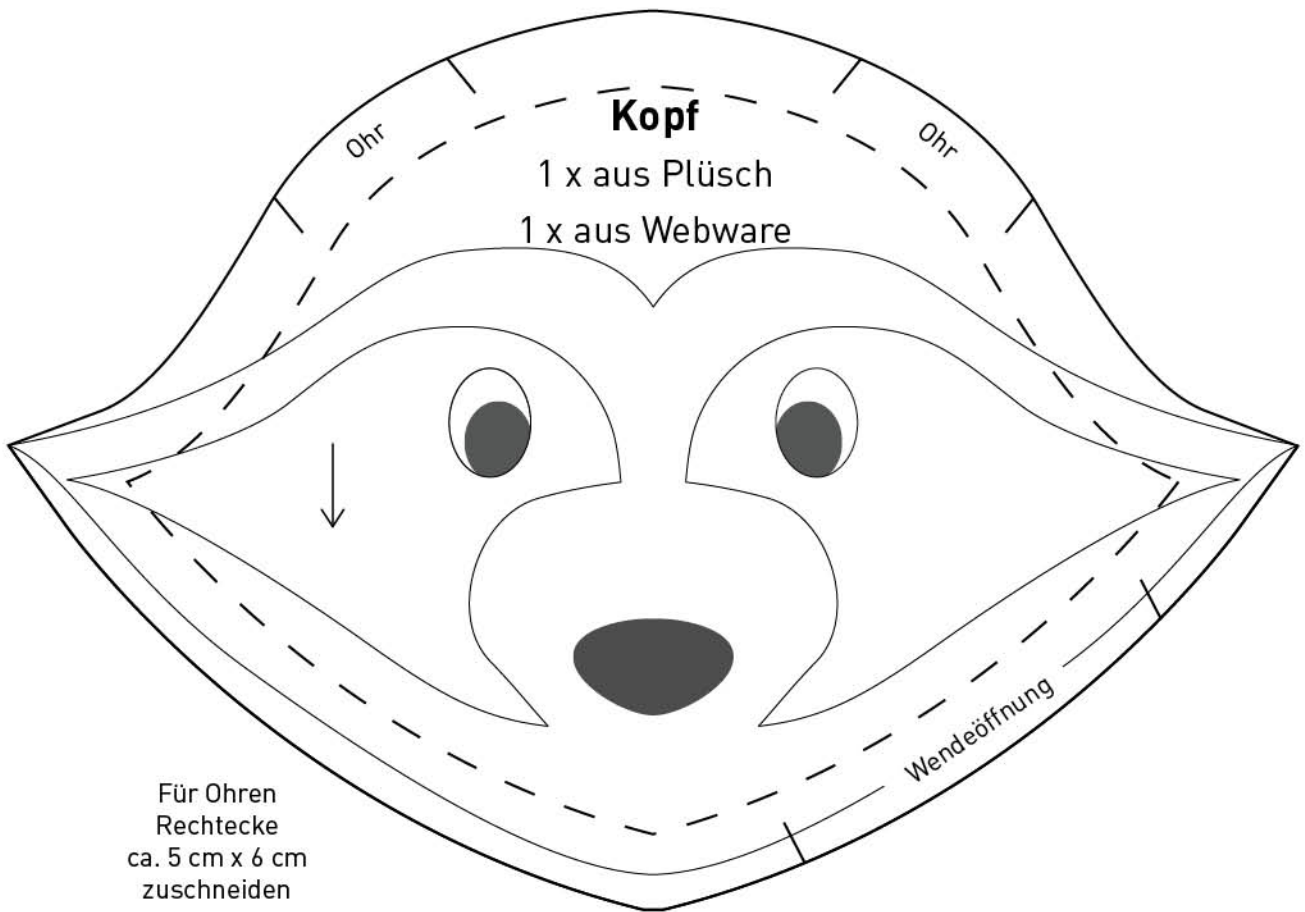




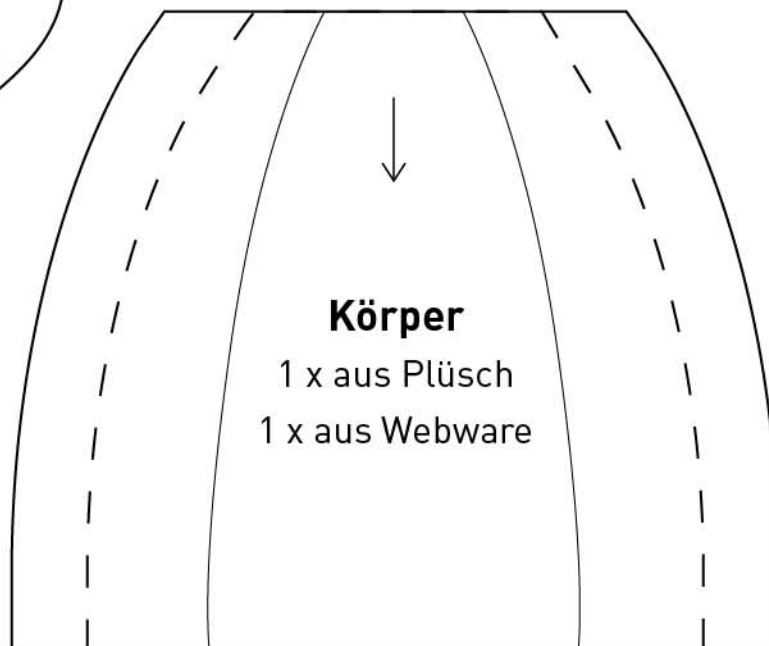
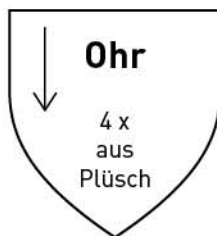
## Regenbogenseite

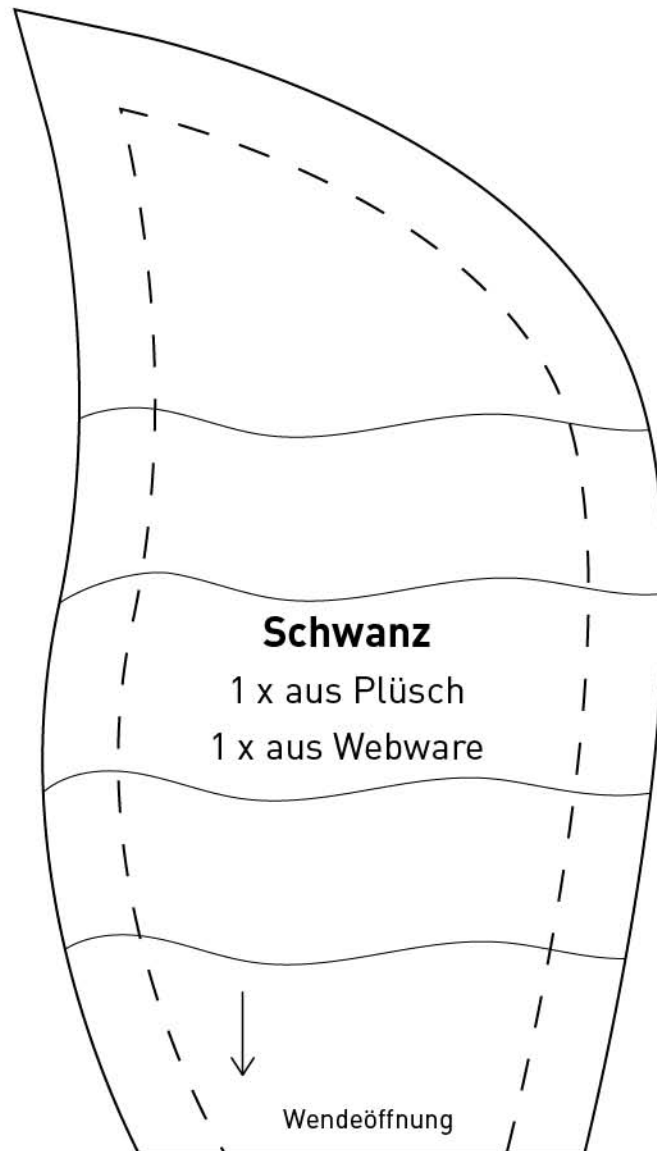


## Vorlagen für Variante: Waschbär



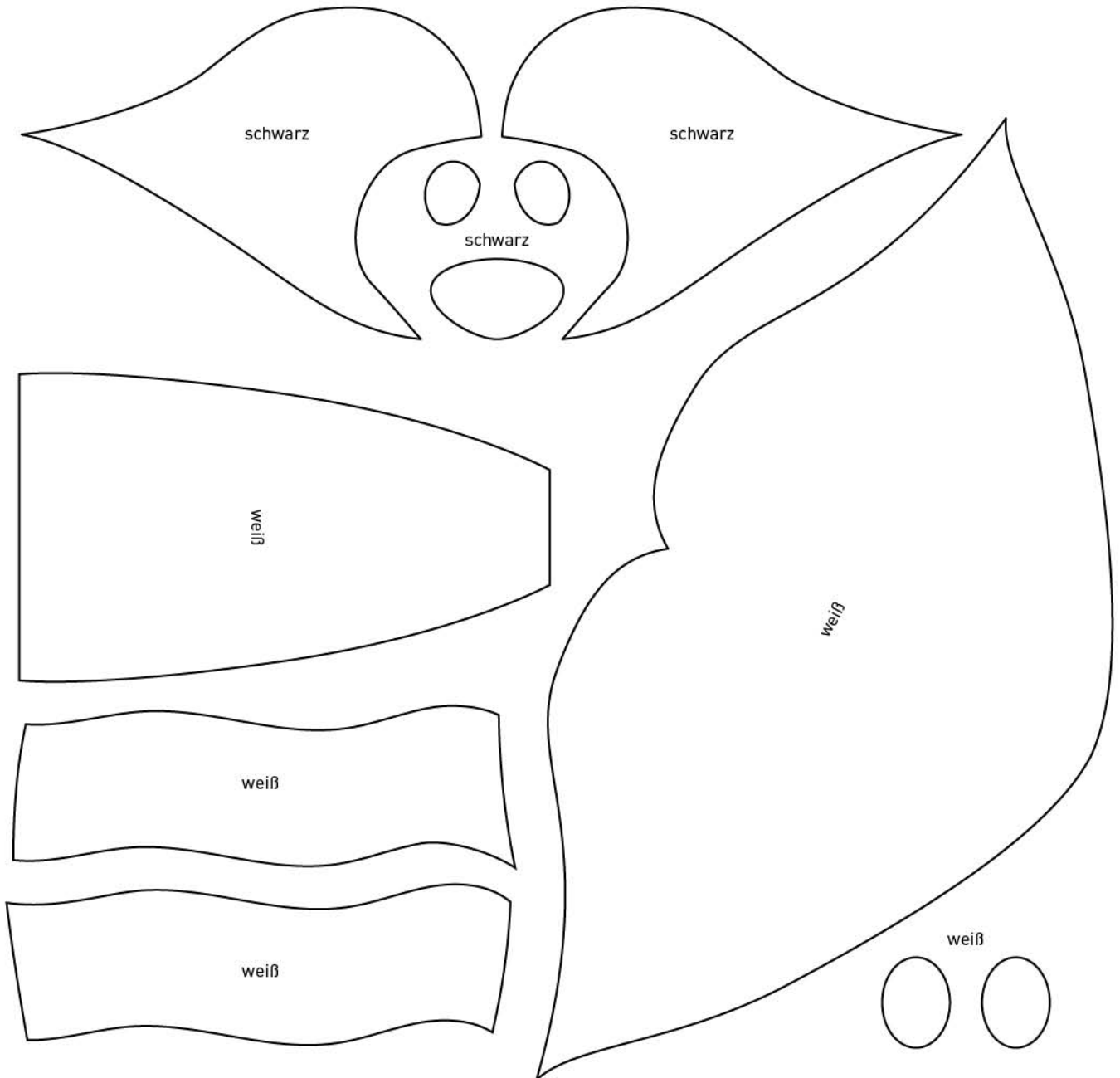
Für Ohren  
Rechtecke  
ca. 5 cm x 6 cm  
zuschneiden



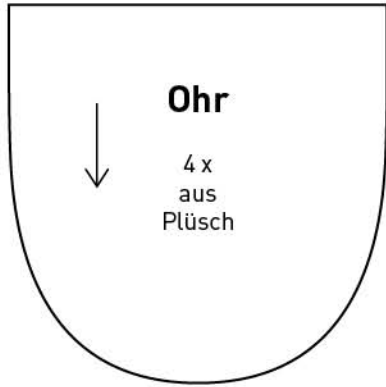


## Applikationen für Waschbär

auf Vliesofix übertragen

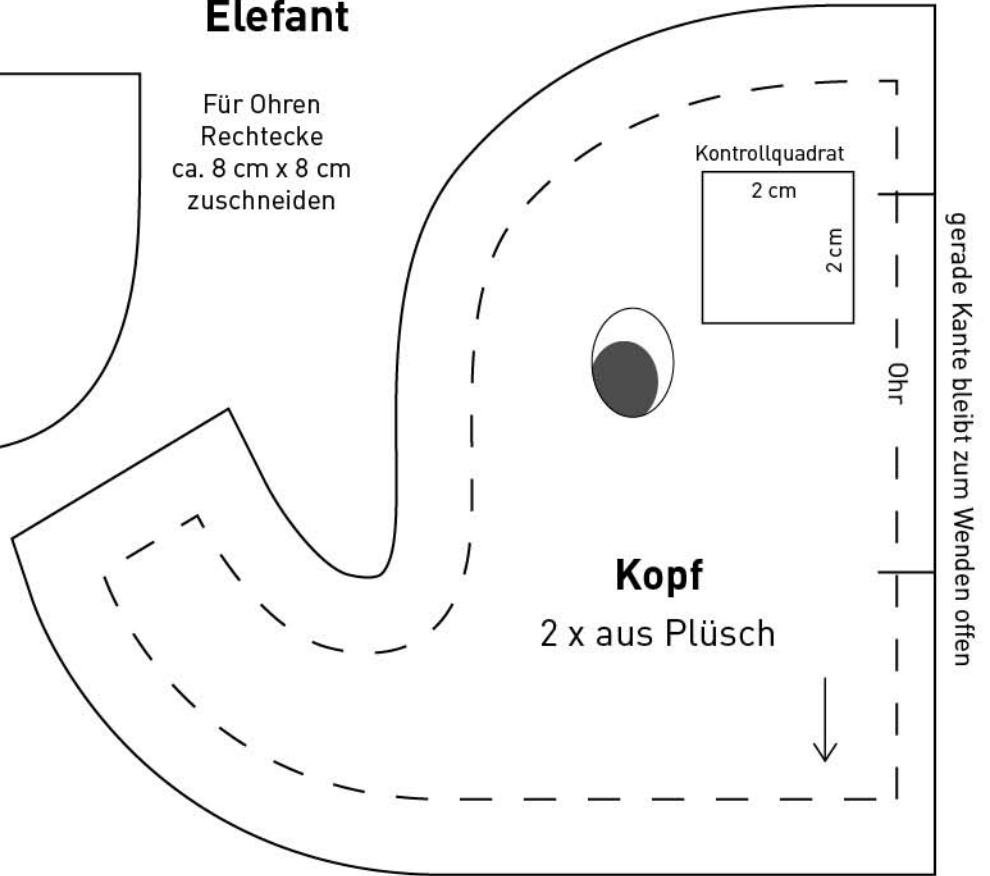
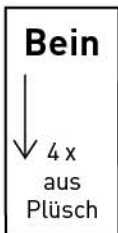


# Elefant

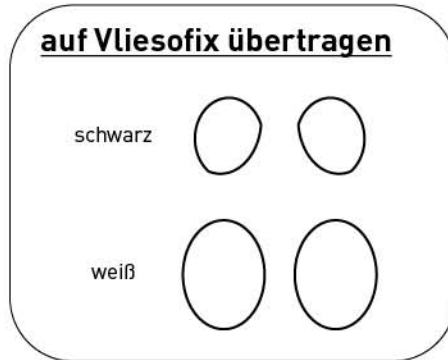


Für Ohren  
Rechtecke  
ca. 8 cm x 8 cm  
zuschneiden

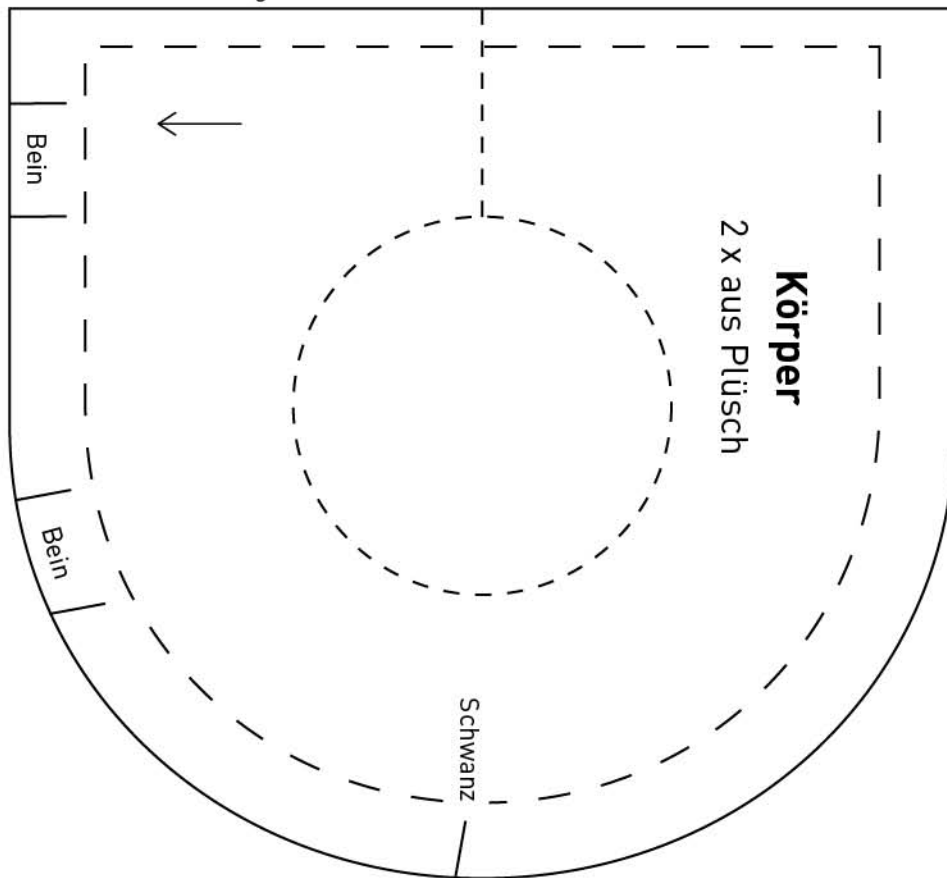
Für Beine  
Rechtecke  
ca. 4 cm x 5 cm  
zuschneiden



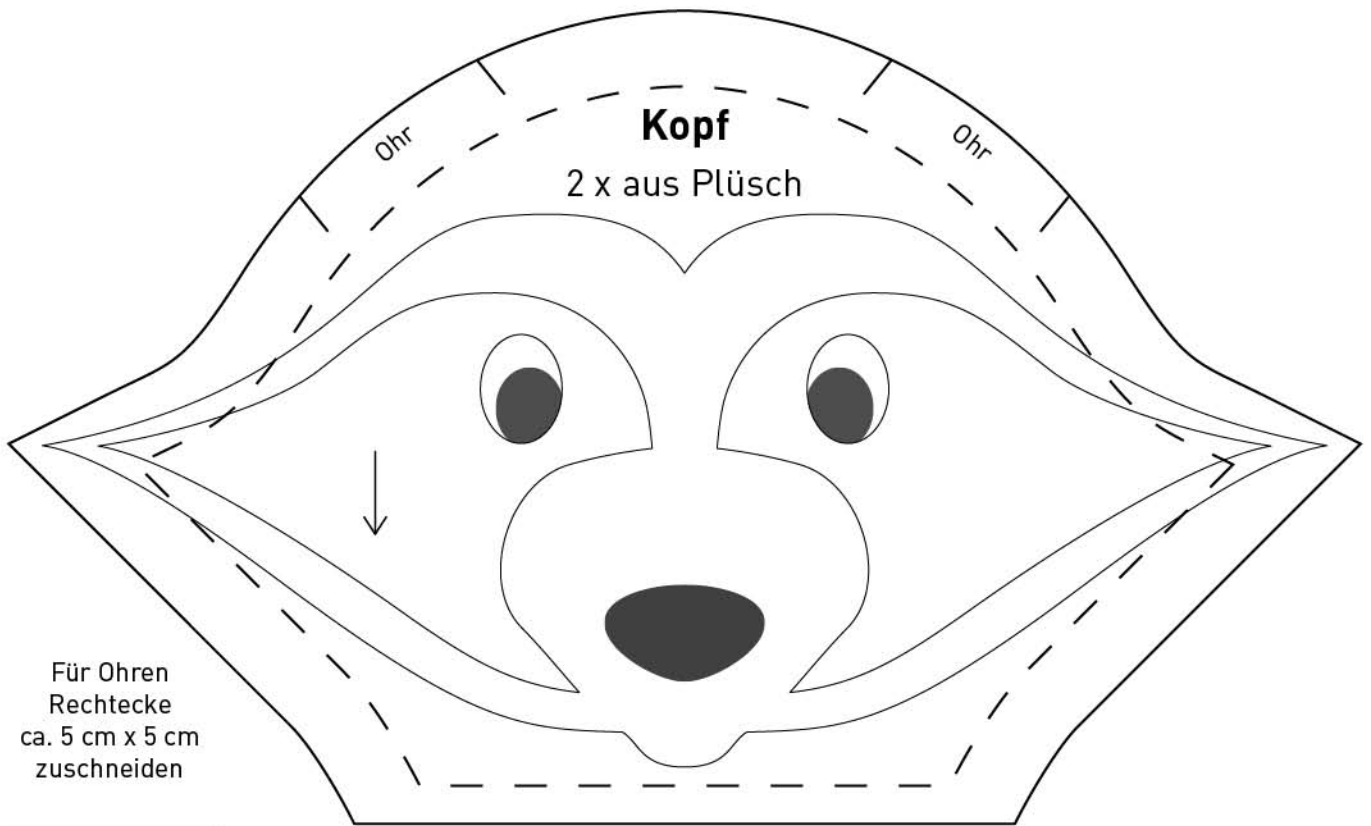
## Applikationen für Elefant



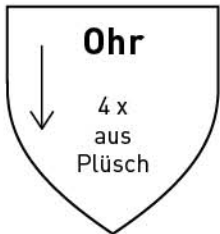
gerade Kante bleibt zum Wenden offen



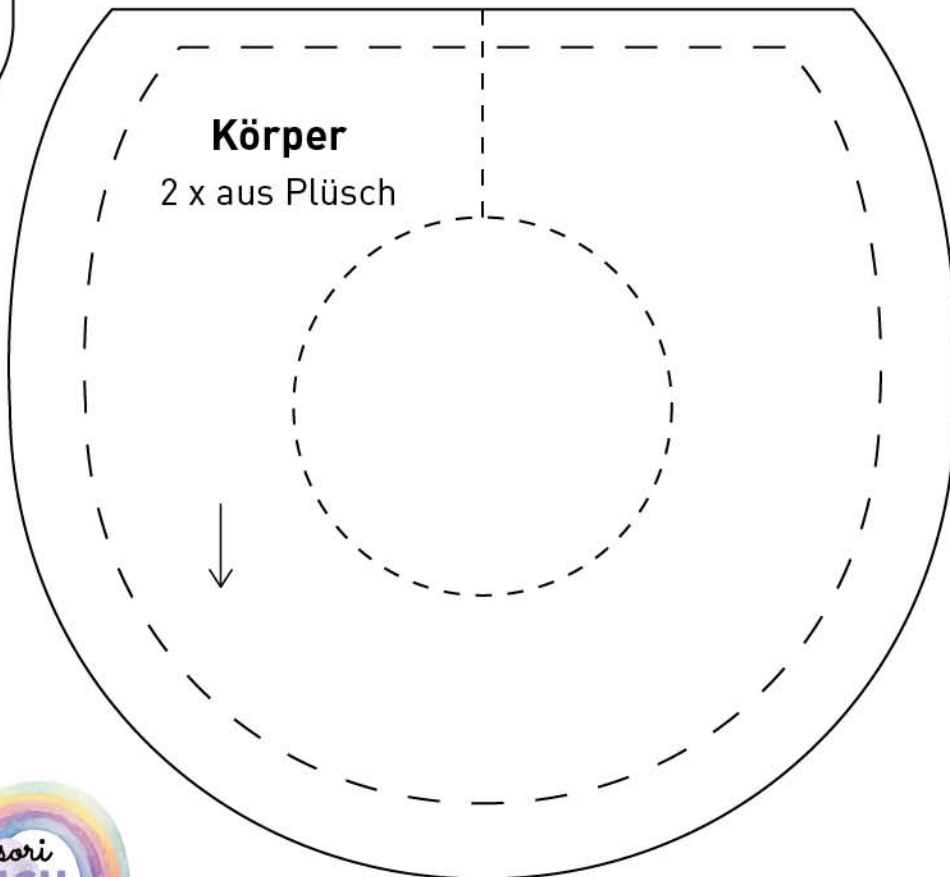
# Waschbär



Für Ohren  
Rechtecke  
ca. 5 cm x 5 cm  
zuschneiden

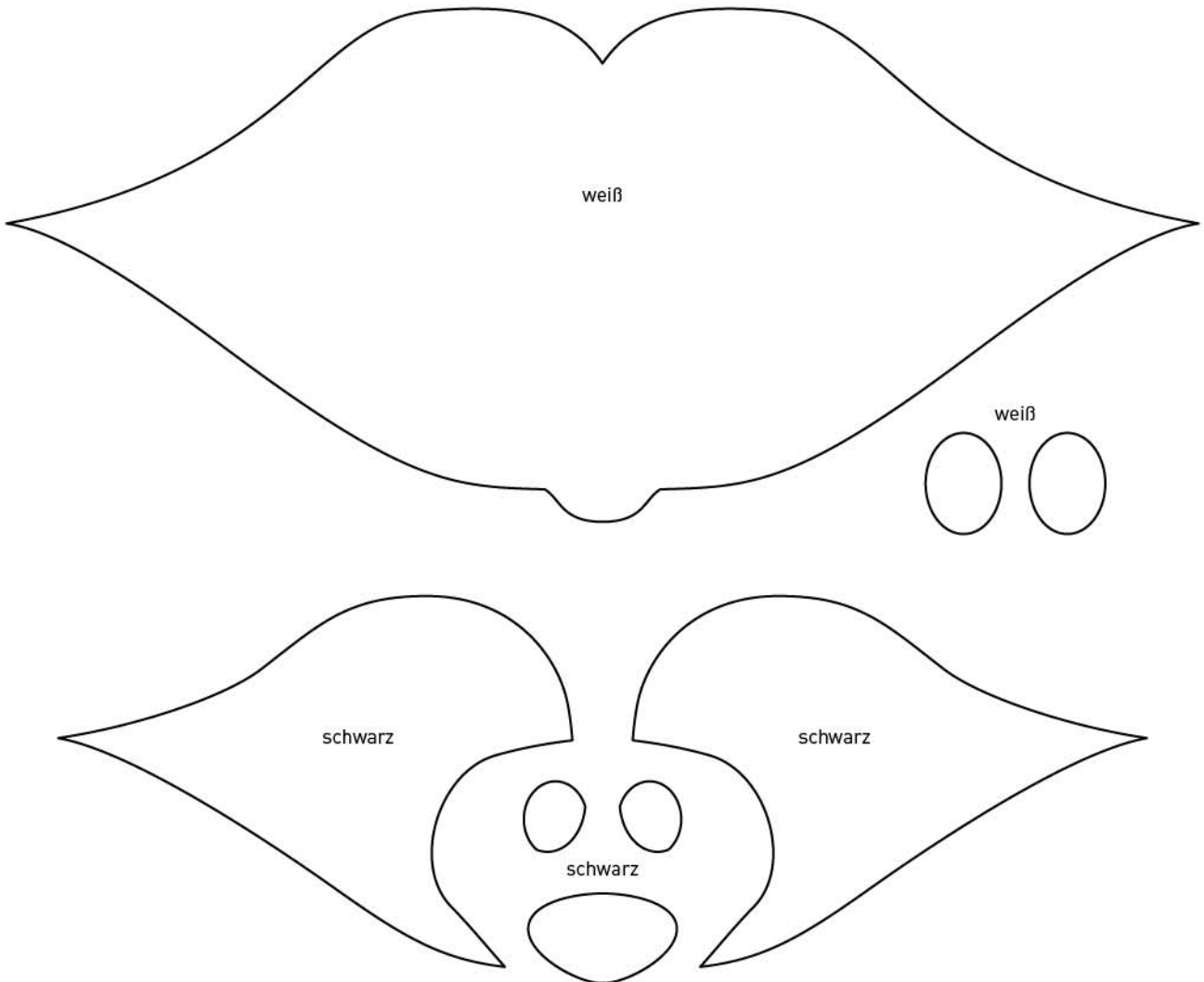


gerade Kante bleibt zum Wenden offen



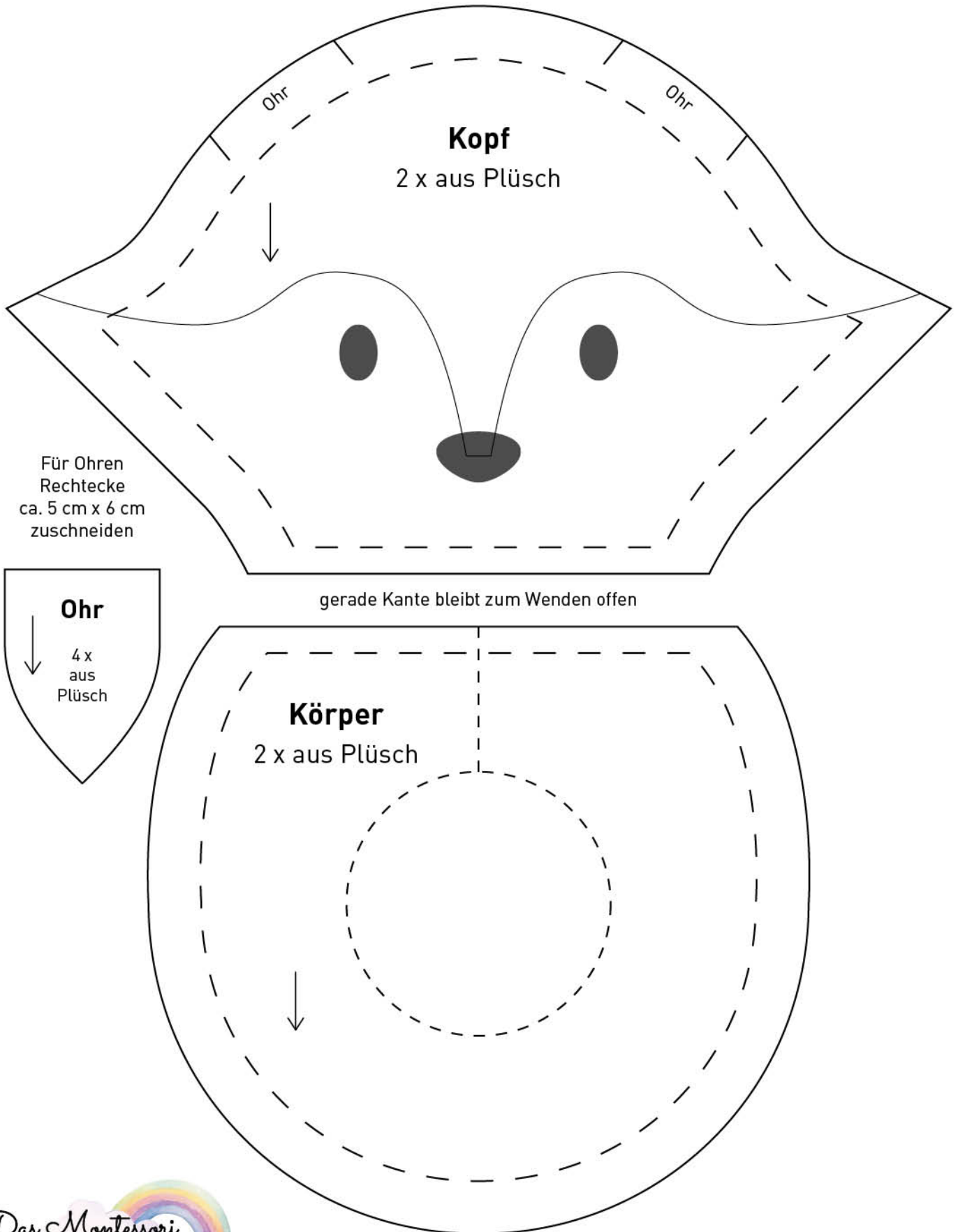
## Applikationen für Waschbär

auf Vliesofix übertragen

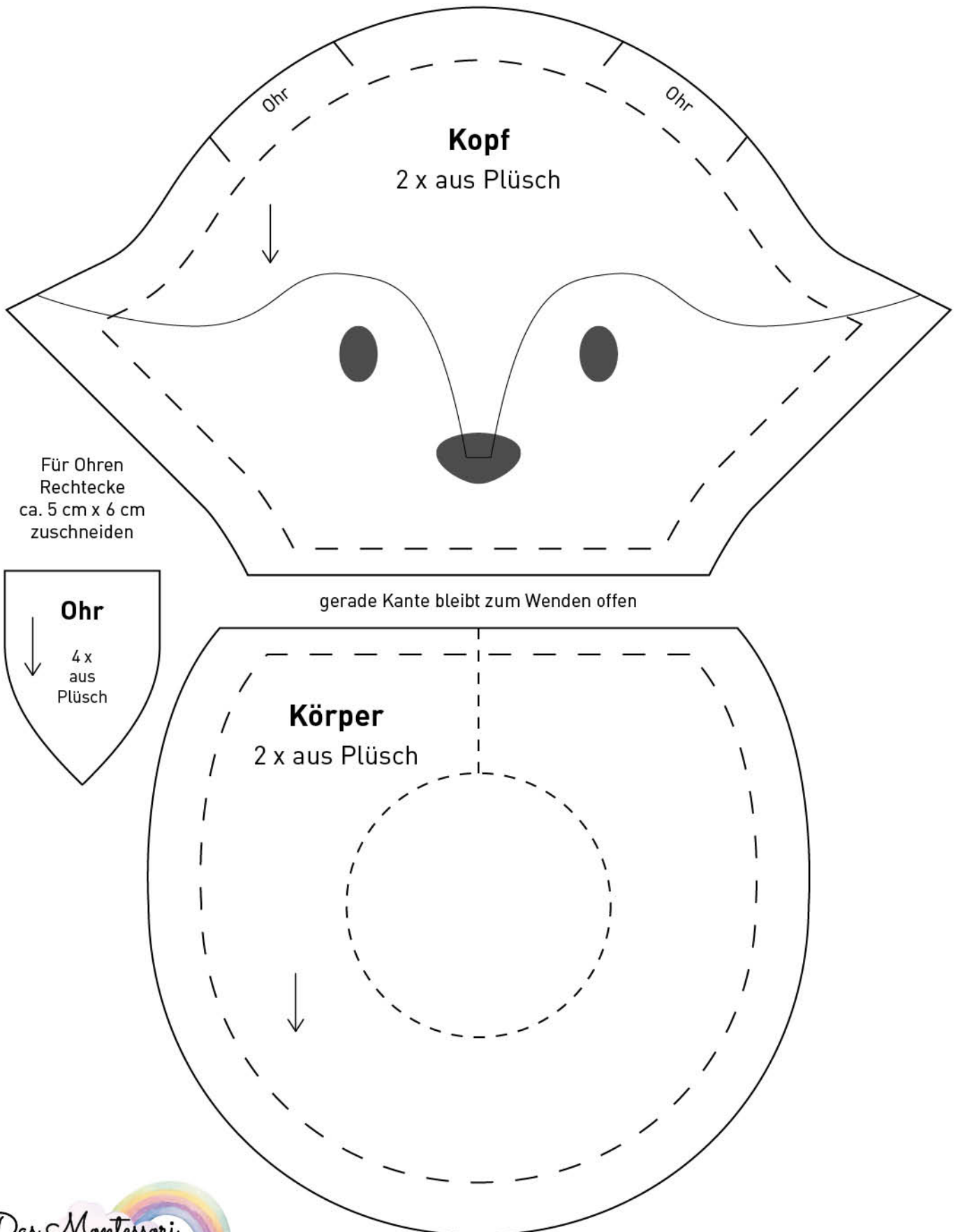




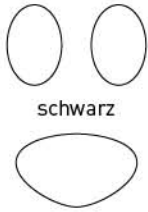
## Vorlagen für Variante: Fuchs



## Vorlagen für Variante: Fuchs

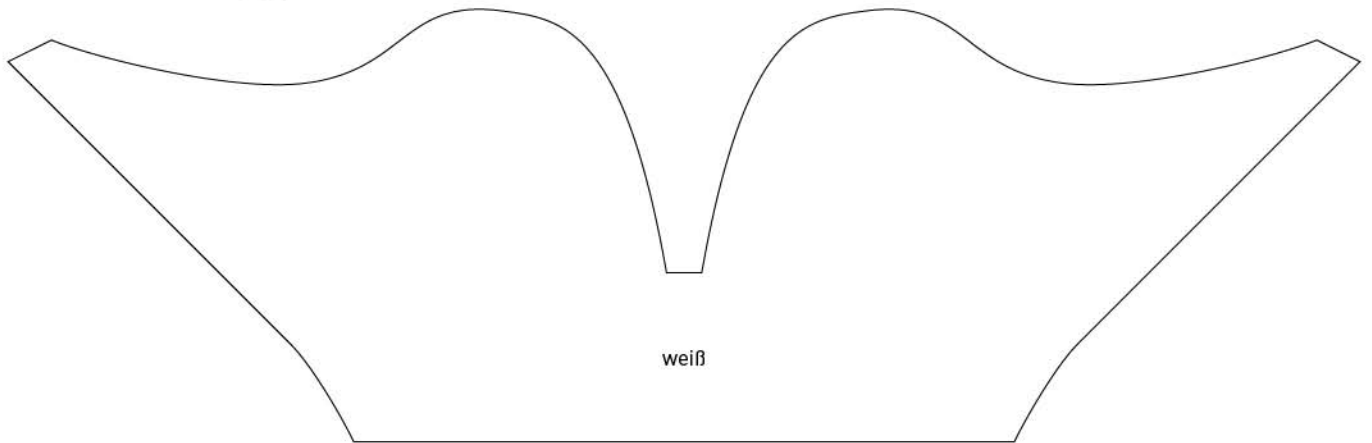


## Applikationen für Fuchs

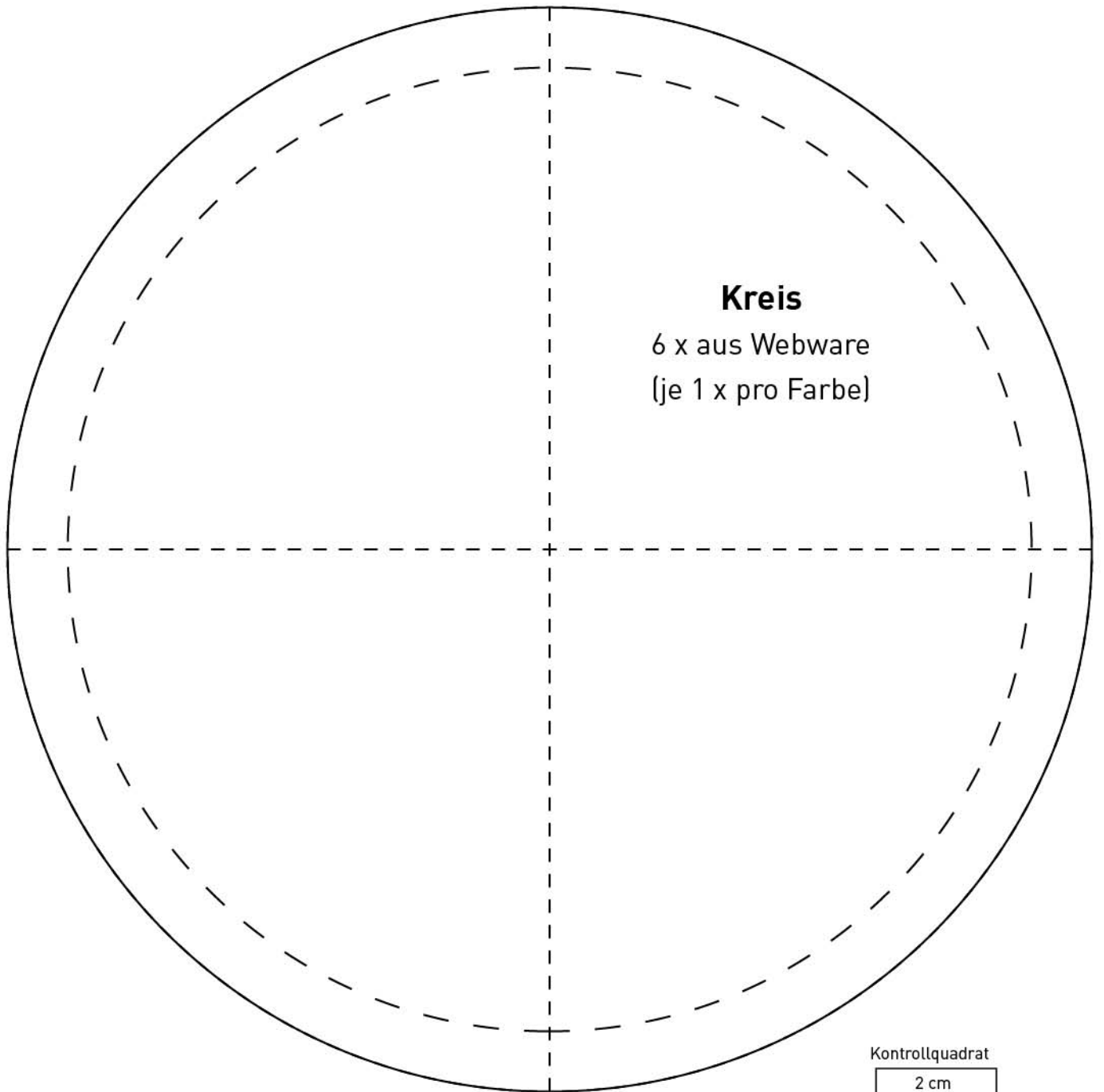


schwarz

auf Vliesofix übertragen



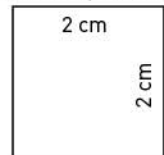
weiß



**Kreis**

6 x aus Webware  
(je 1 x pro Farbe)

Kontrollquadrat

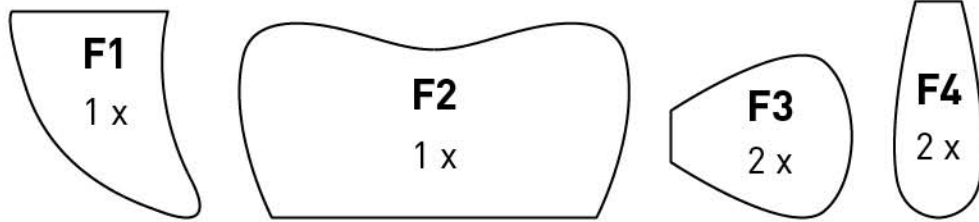


**Linsenform**

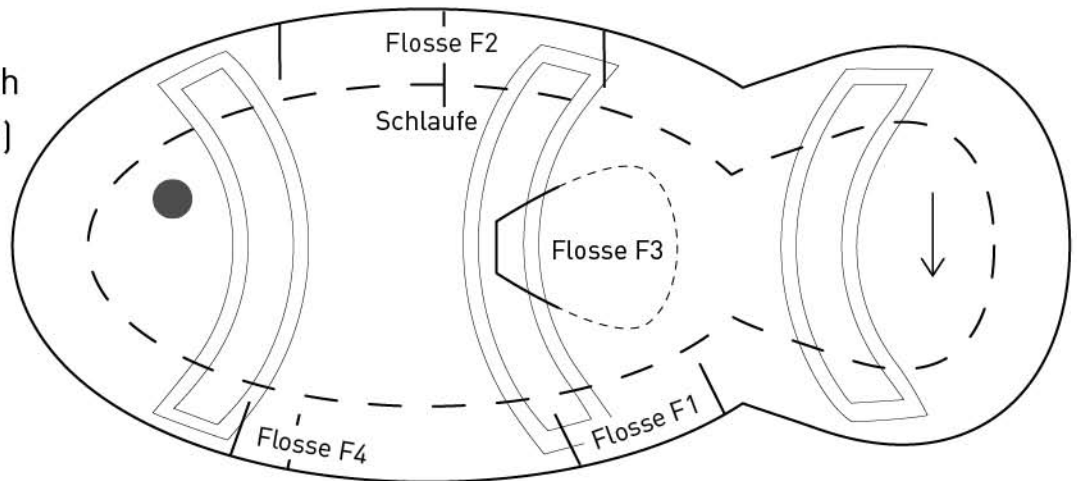
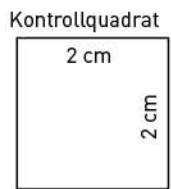
12 x aus Webware  
(je 2 x pro Farbe)

## Fisch

**Flossen**  
aus Filz



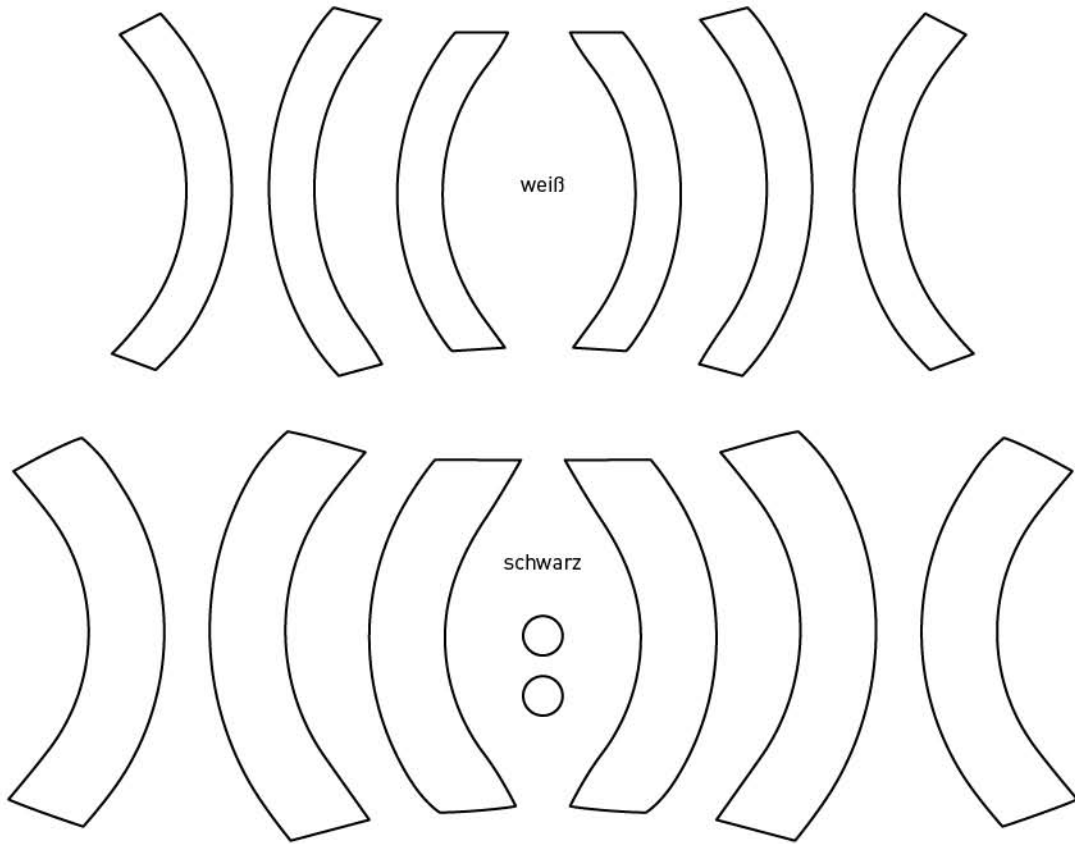
**Fisch**  
2 x aus Plüsch  
(gegengleich)



im unteren Bereich Wendöffnung freilassen

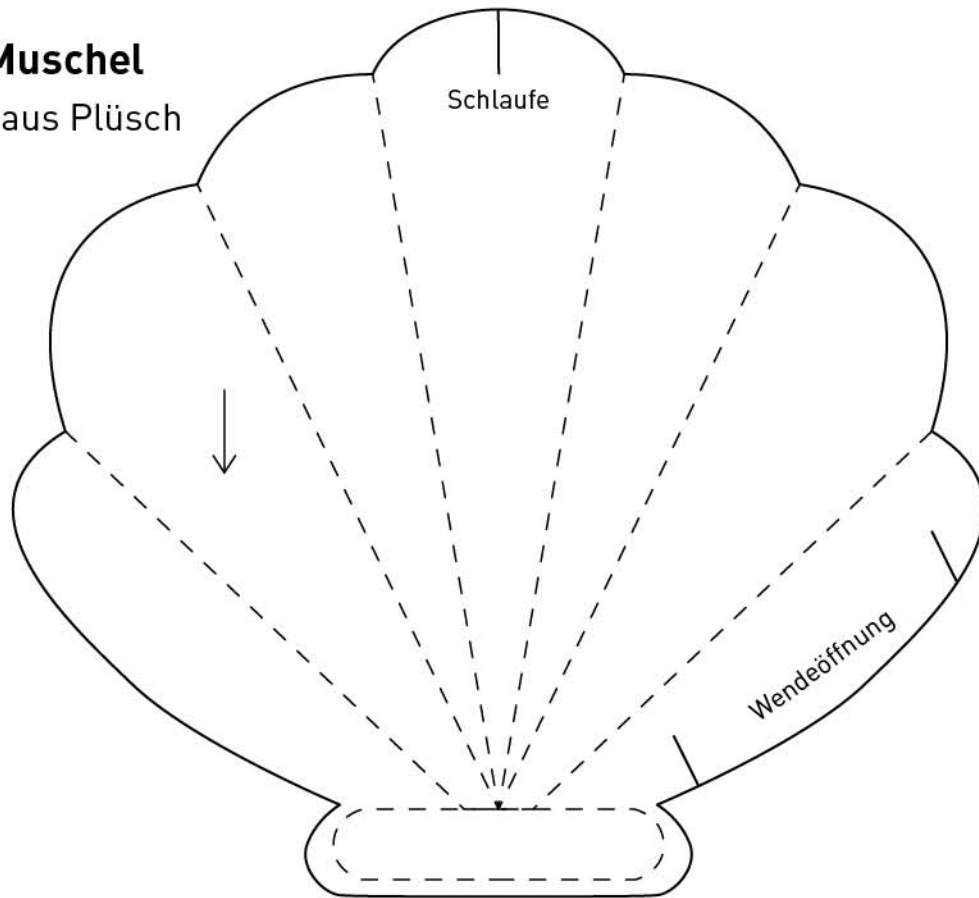
## Applikationen für Fisch

auf Vliesofix übertragen



## Muschel

**Muschel**  
2 x aus Plüsch

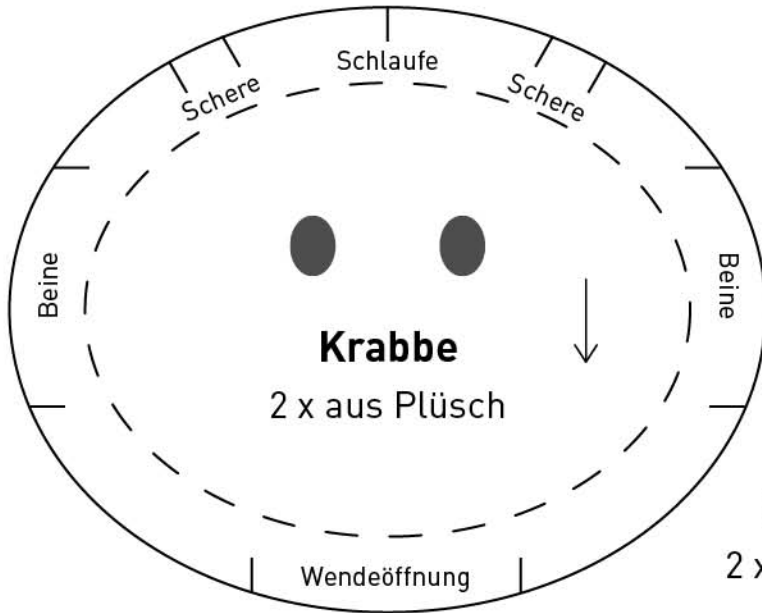


## Anker

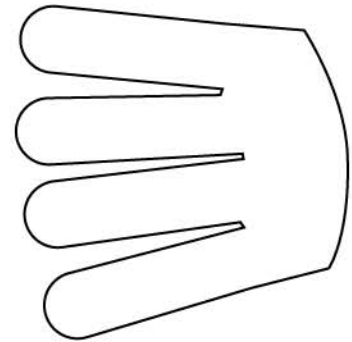
**Anker**  
2 x aus Filz



## Krabbe



**Schere**  
2 x aus Filz



**Beine**  
2 x aus Filz

## Applikationen für Krabbe

auf Vliesofix übertragen

schwarz



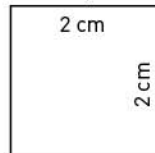


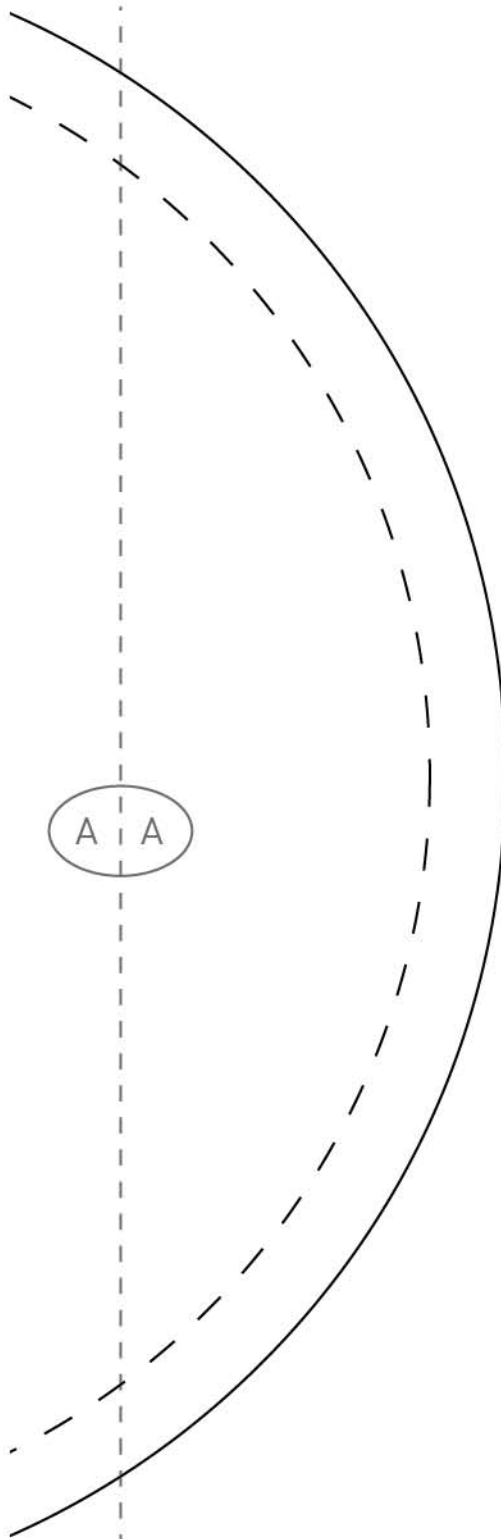
sofern keine Schaumstoffrolle  
verwendet wird:

**Kreis für Bezug  
2 x aus Canvas**

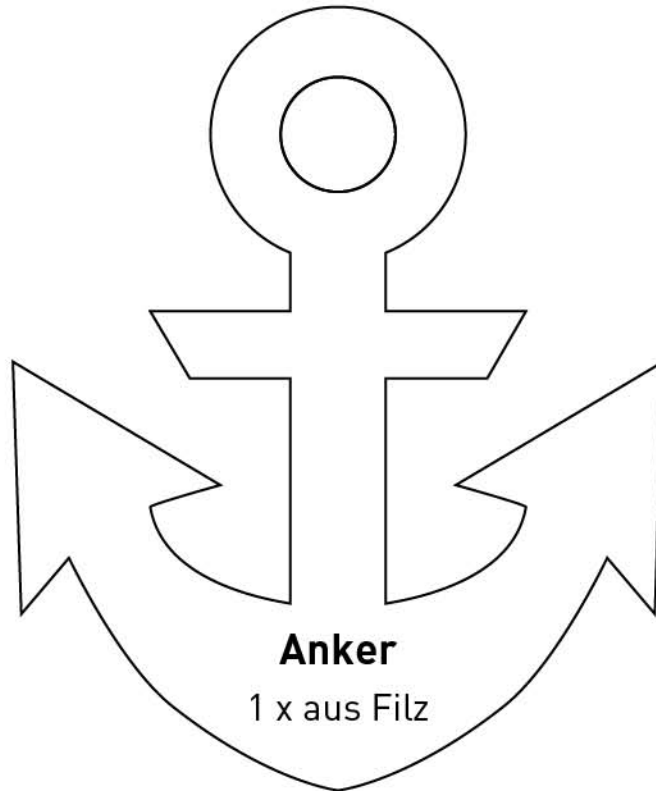
**+ Rechteck für Bezug  
42 cm (Breite) x 66 cm (Höhe)  
1 x aus Canvas**

Kontrollquadrat



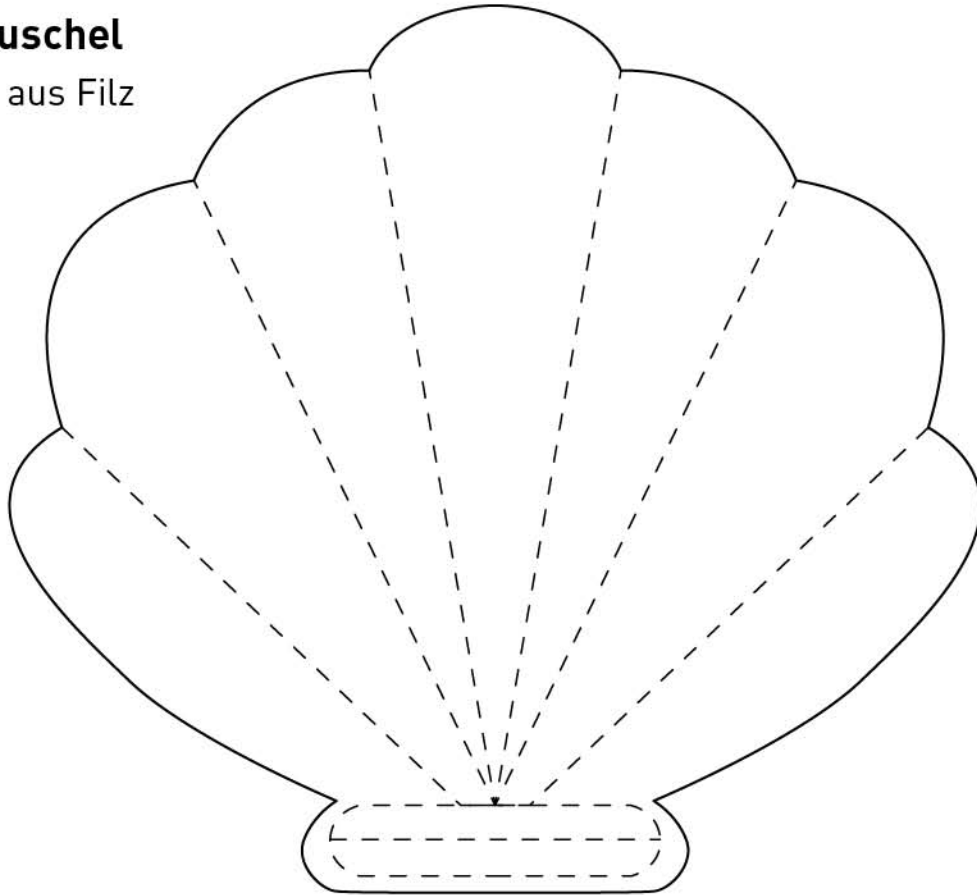


## Anker



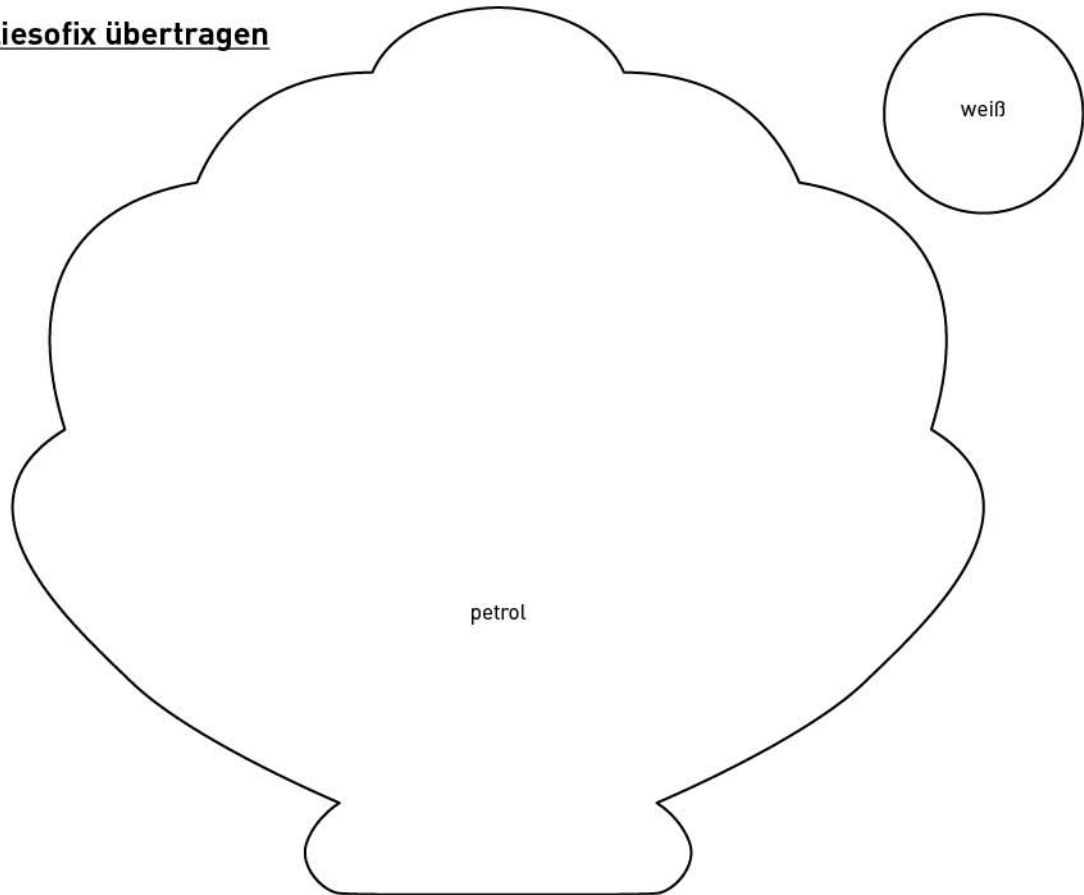
## Muschel

**Muschel**  
2 x aus Filz



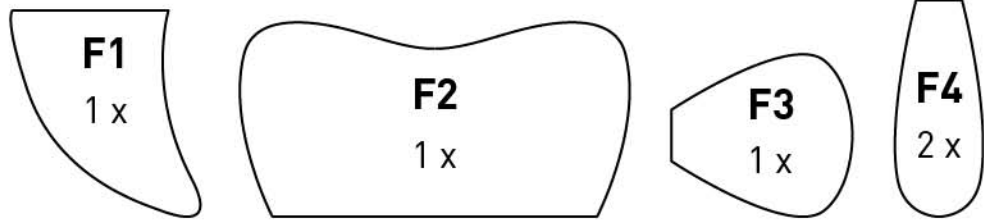
## Applikationen für Muschel

auf Vliesofix übertragen

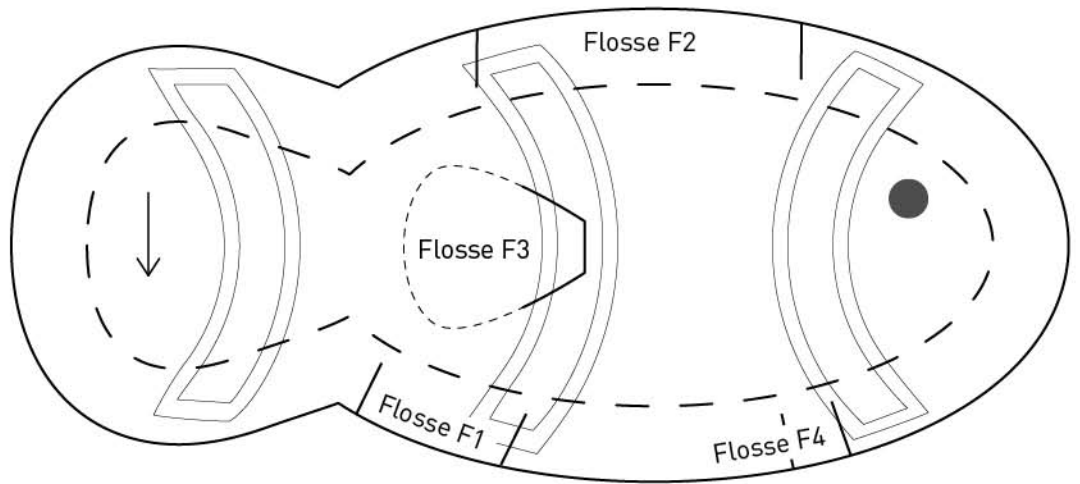


## Fisch

**Flossen**  
aus Filz



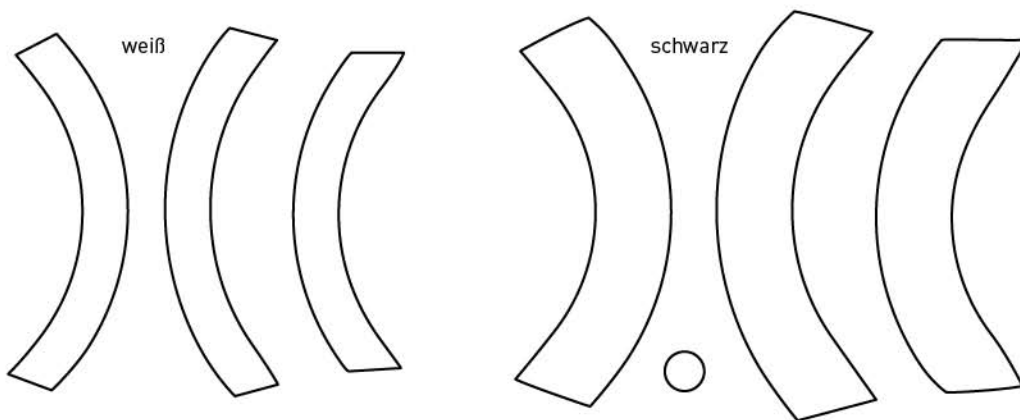
**Fisch**  
2 x aus Plüsch  
(gegengleich)



im unteren Bereich Wendeöffnung freilassen

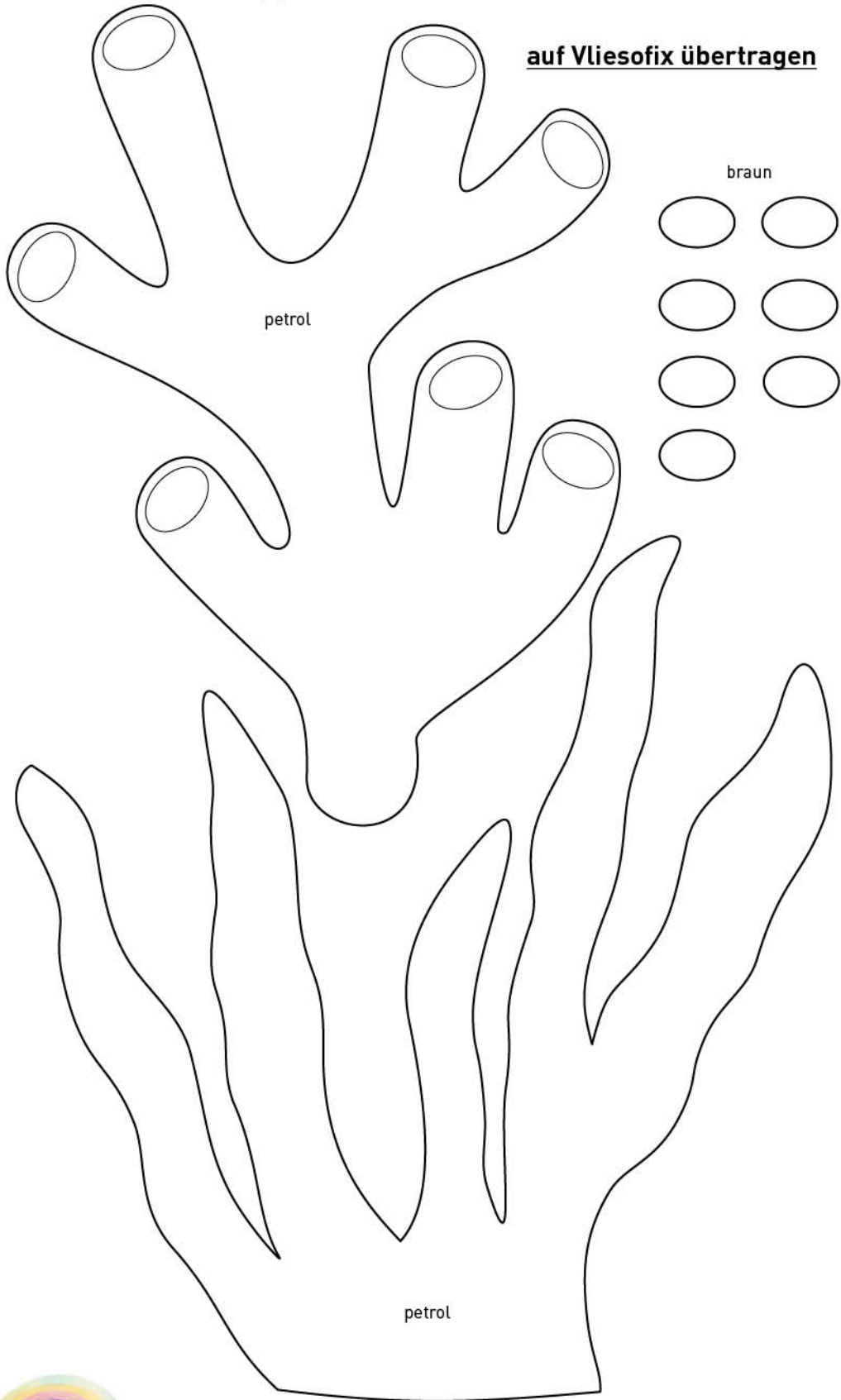
## Applikationen für Fisch

auf Vliesofix übertragen



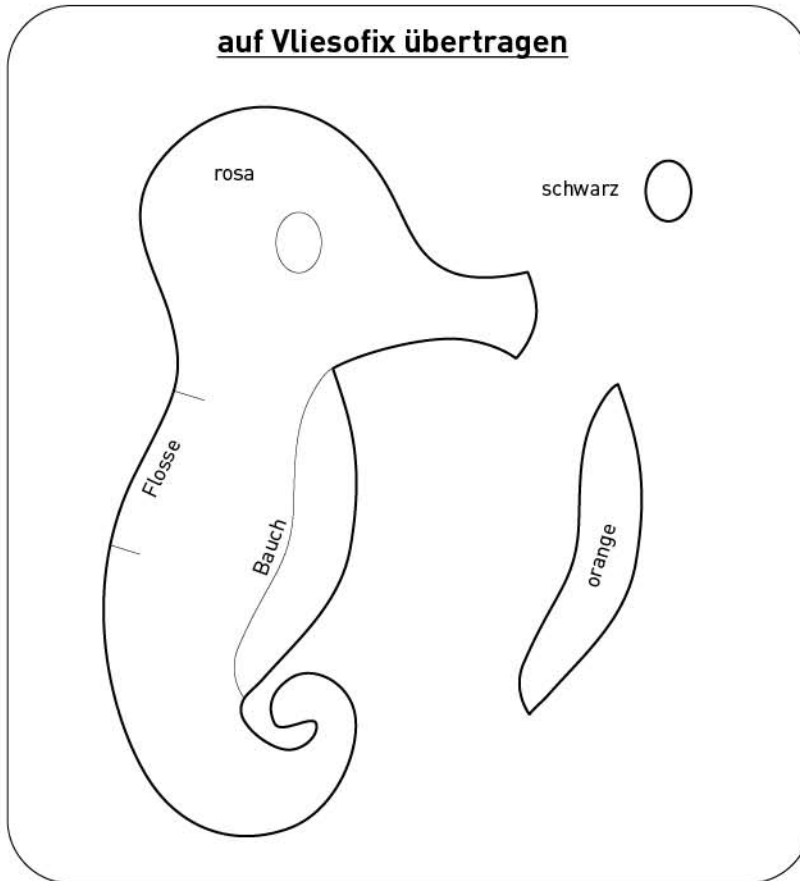
# Korallen

## Applikationen für Korallen

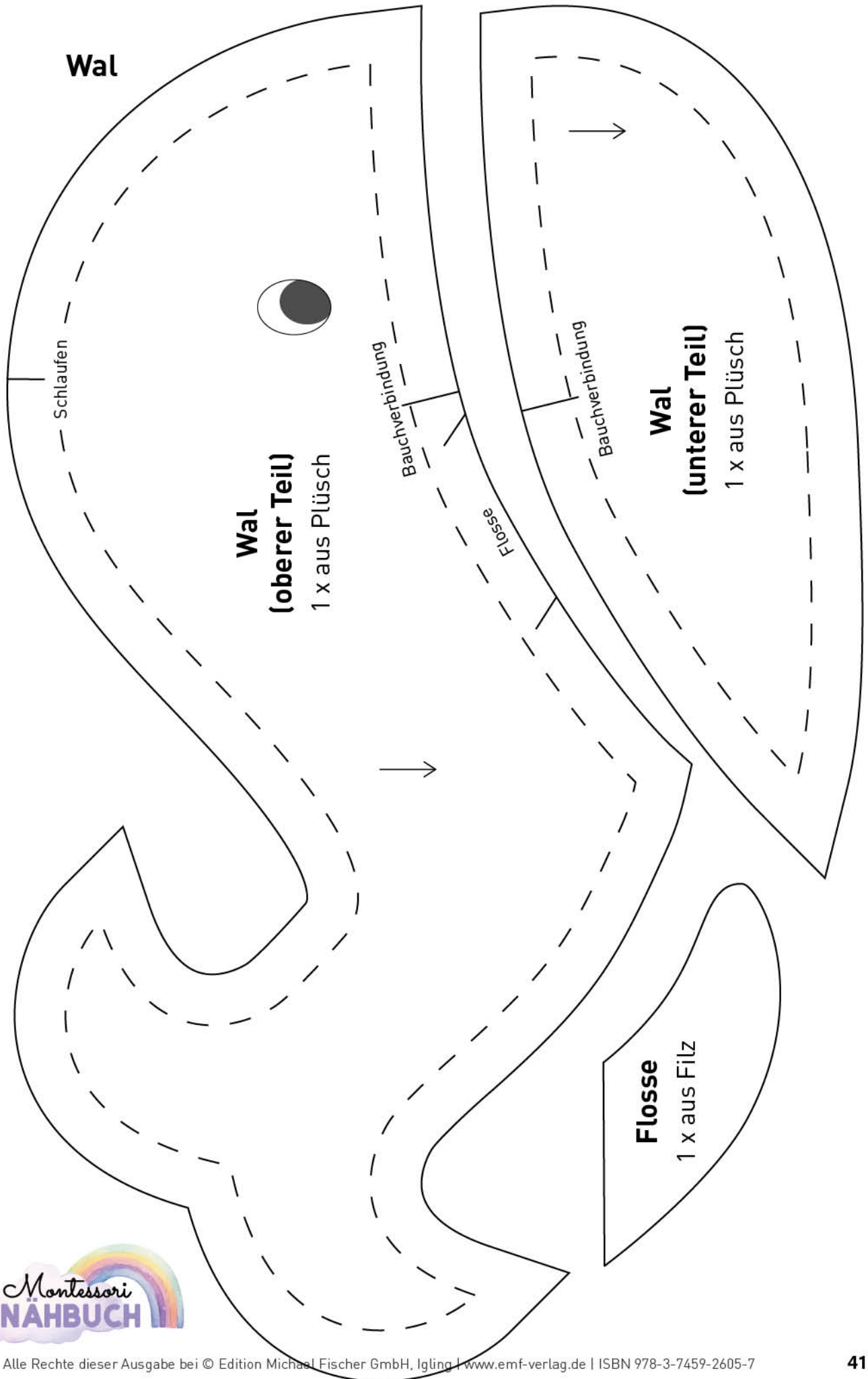


## Seepferdchen

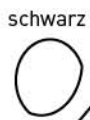
### Applikationen für Seepferdchen







**Applikationen für Wal**  
**auf Vliesofix übertragen**



**Wal**  
**(Rückseite)**  
1 x aus Webware

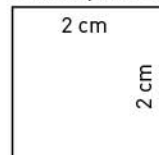
Wendeöffnung



**Tücherbox**  
**Teil 1a**  
(oben/unten)

2 x aus Außenstoff  
2 x aus Innenstoff

Kontrollquadrat



**Tücherbox**  
**Teil 2a**  
(Seite lang)

2 x aus Außenstoff  
2 x aus Innenstoff

**Tücherbox**  
**Teil 3a**  
(Seite kurz)

2 x aus Außenstoff  
2 x aus Innenstoff

**Vlieseinlage**  
**Teil 1b**  
(oben/unten)

2 x aus H 630

1 x aus Decovil I light

1 x ohne Oval aus Decovil I light  
(für oben)

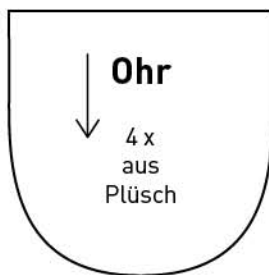
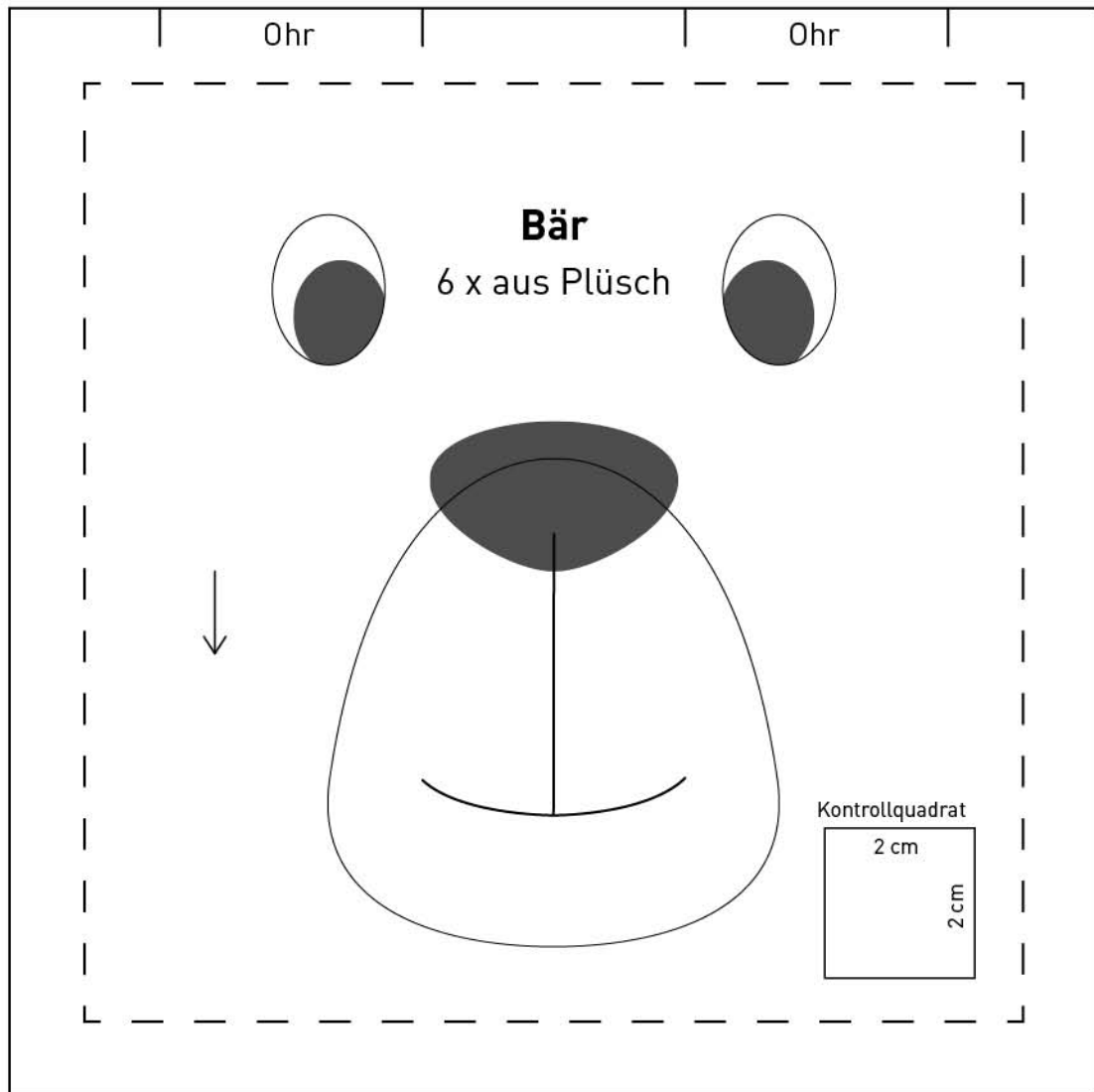
**Vlieseinlage**  
**Teil 2b**  
(Seite lang)

2 x aus H630  
2 x aus Decovil I light

**Vlieseinlage**  
**Teil 3b**  
(Seite kurz)

2 x aus H 630  
2 x aus Decovil I light

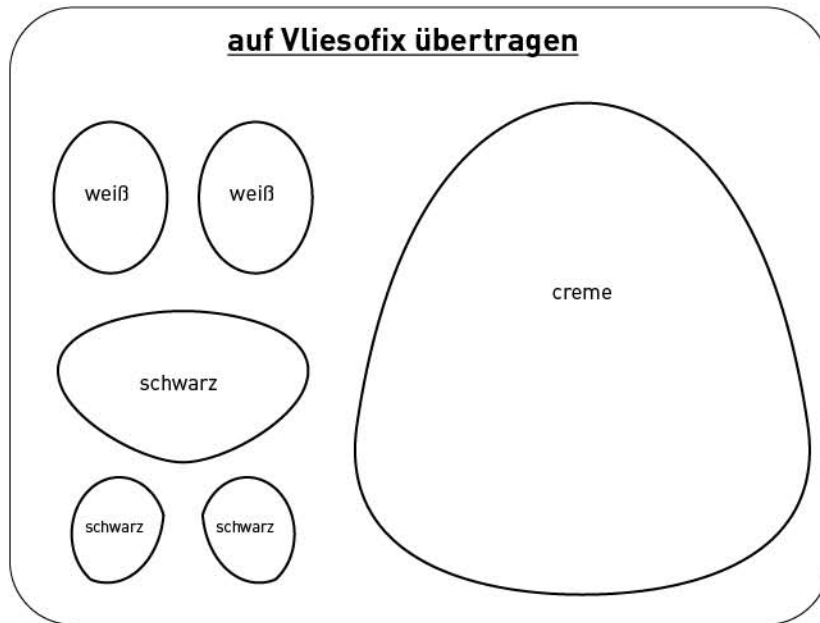
# Bär



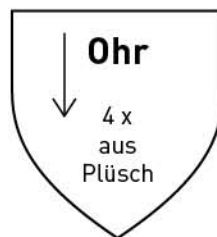
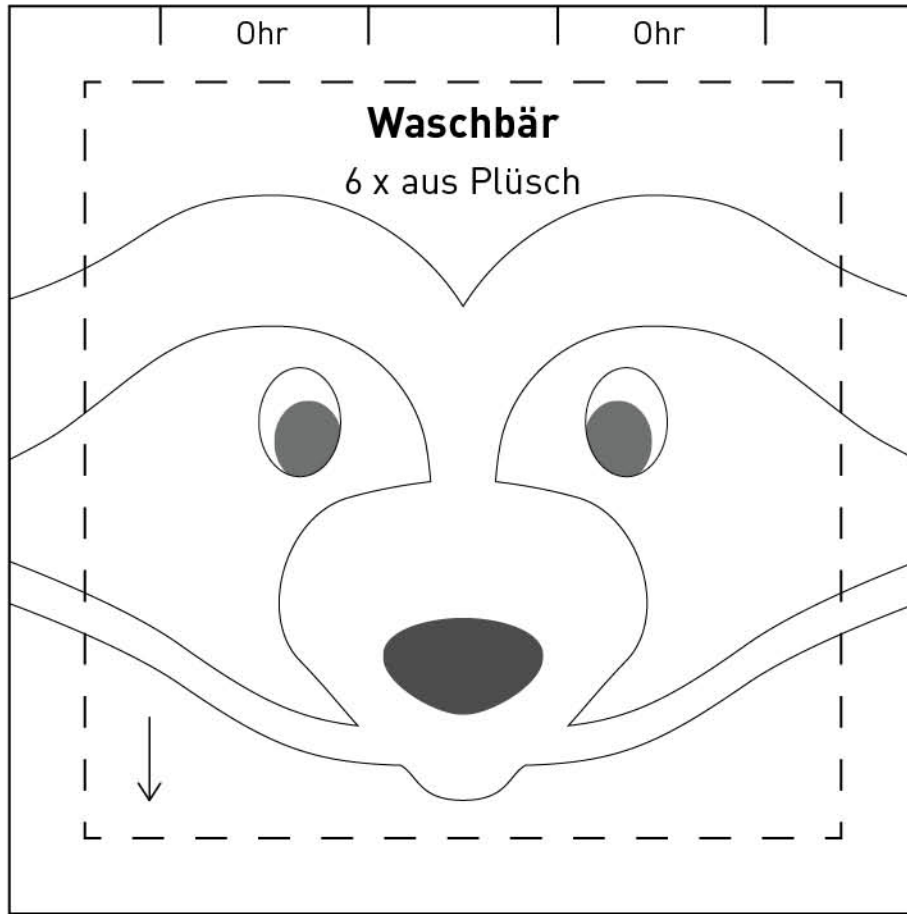
Für Ohren  
Rechtecke  
ca. 6 cm x 6 cm  
zuschneiden



## Applikationen für Bär



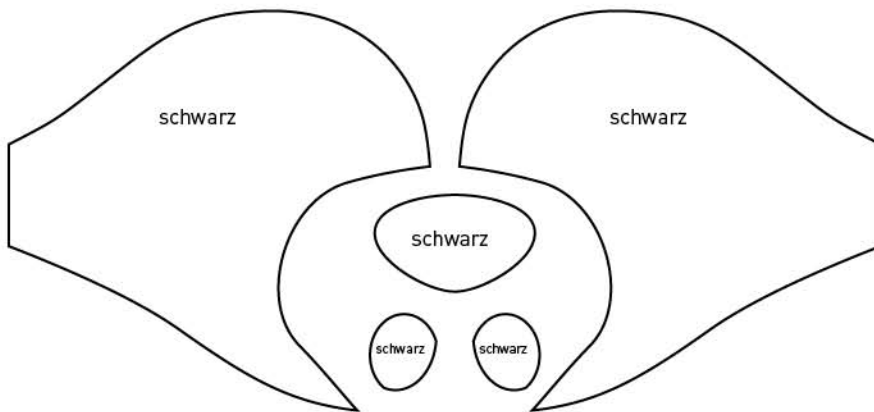
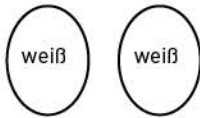
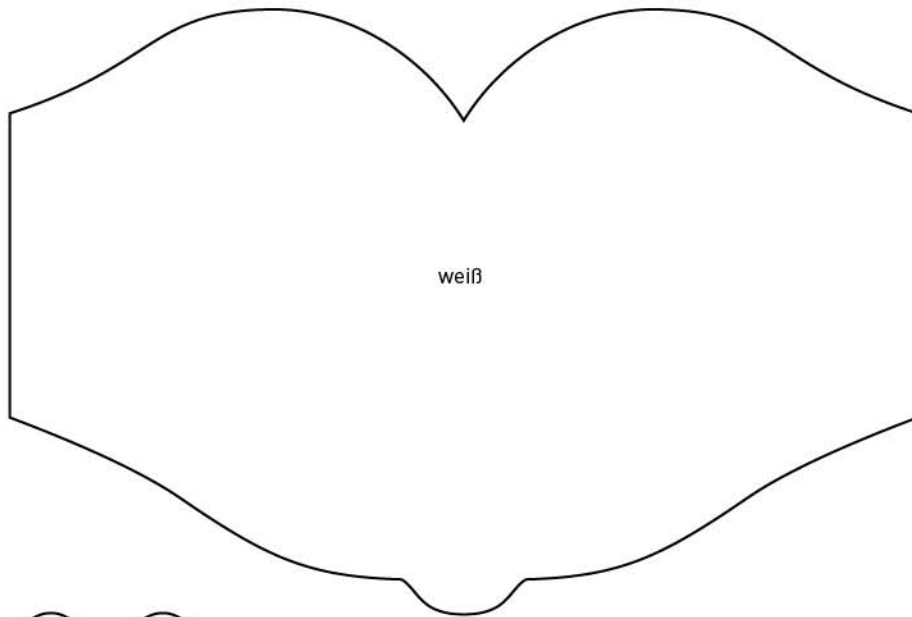
# Waschbär



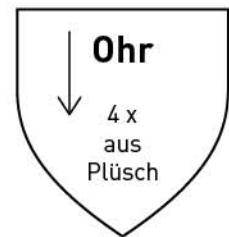
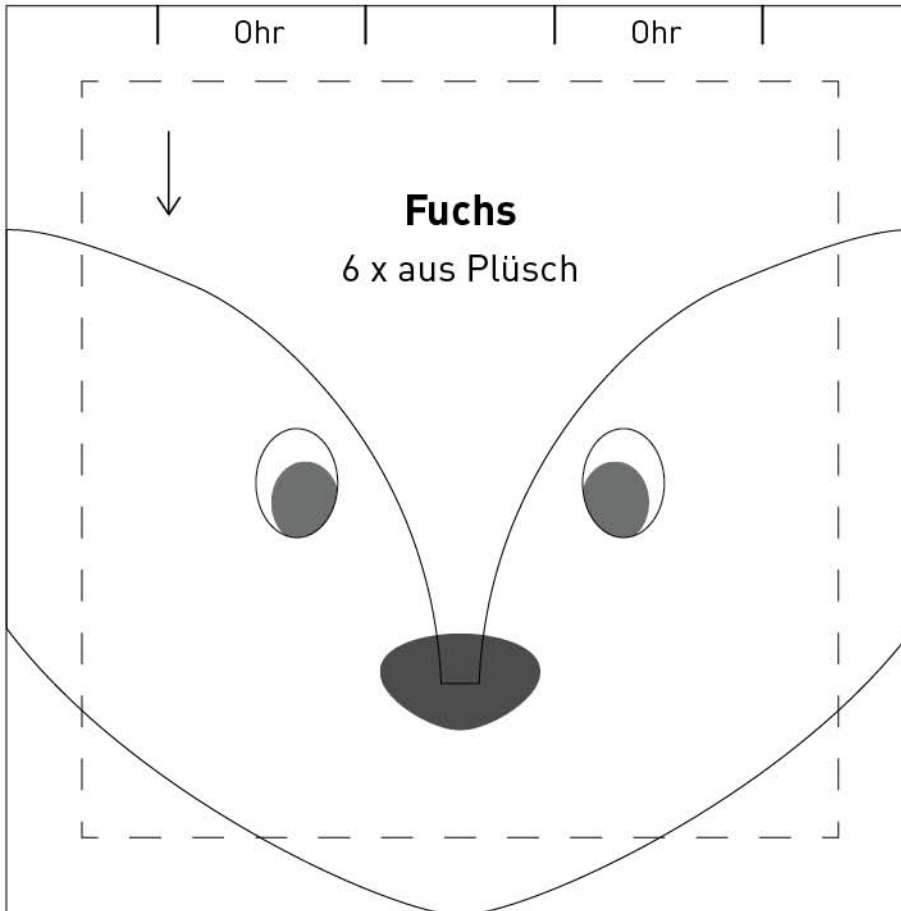
Für Ohren  
Rechtecke  
ca. 5 cm x 5 cm  
zuschneiden

# Applikationen für Waschbär

auf Vliesofix übertragen

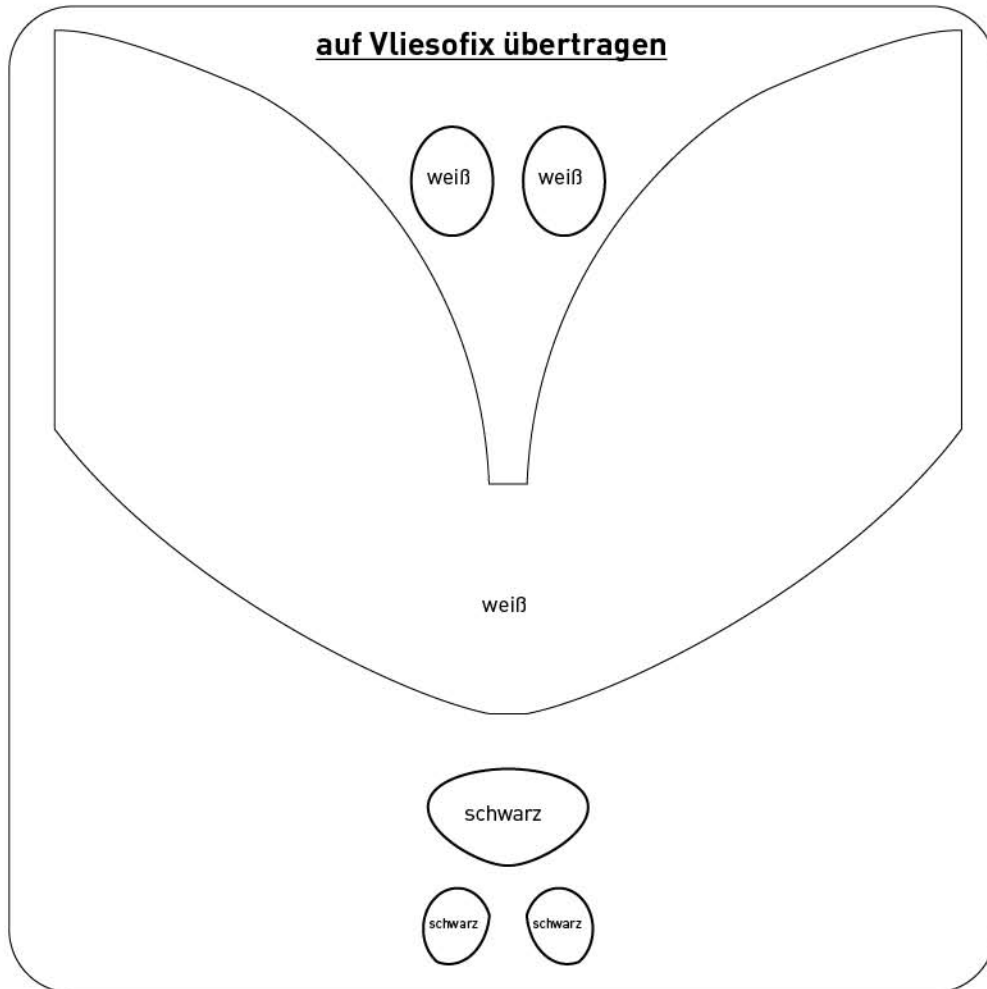


## Fuchs

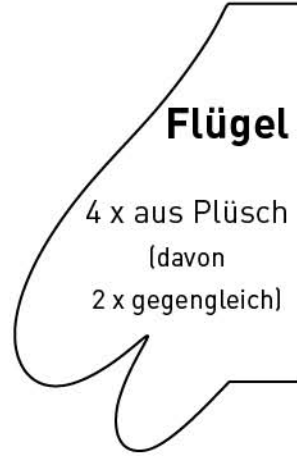
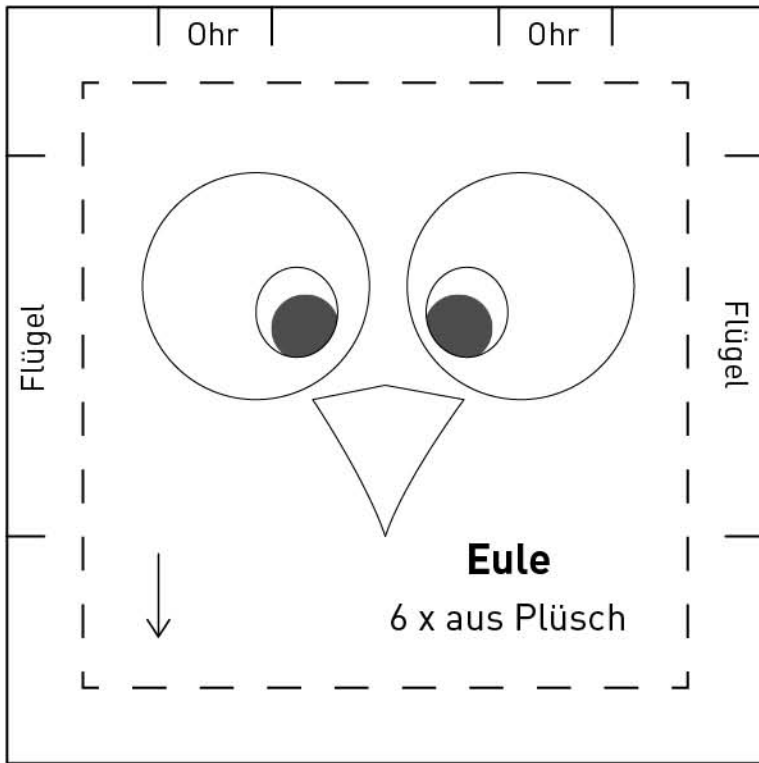


Für Ohren  
Rechtecke  
ca. 5 cm x 5 cm  
zuschneiden

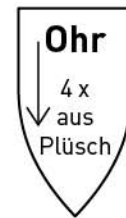
## Applikationen für Fuchs



# Eule

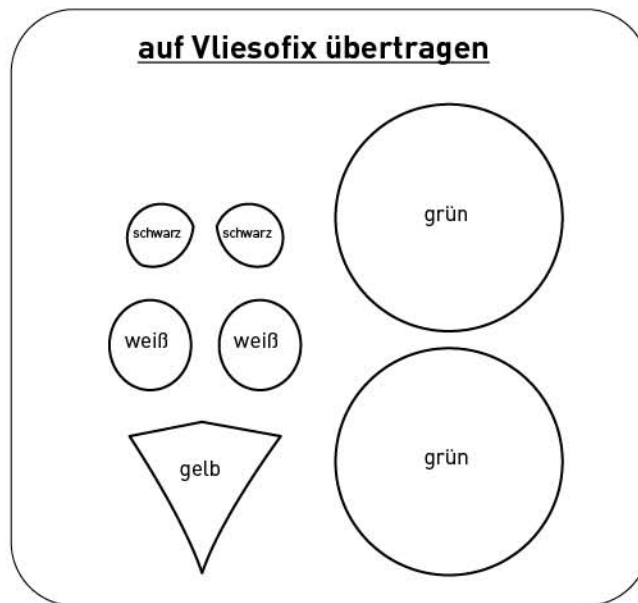


Für Flügel  
Rechtecke  
ca. 6 cm x 8 cm  
zuschneiden

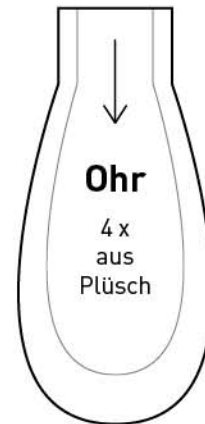
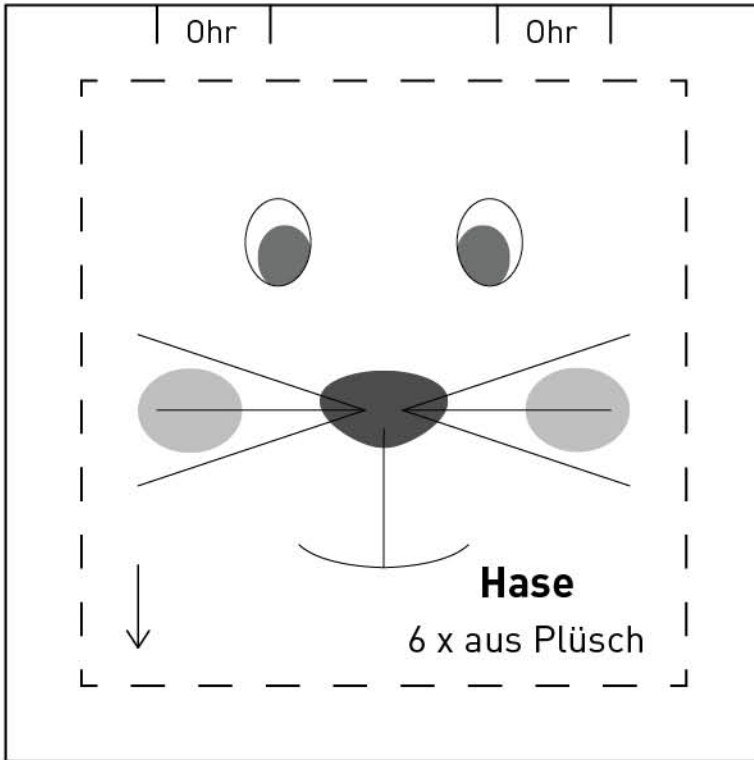


Für Ohren  
Rechtecke  
ca. 4 cm x 5 cm  
zuschneiden

## Applikationen für Eule

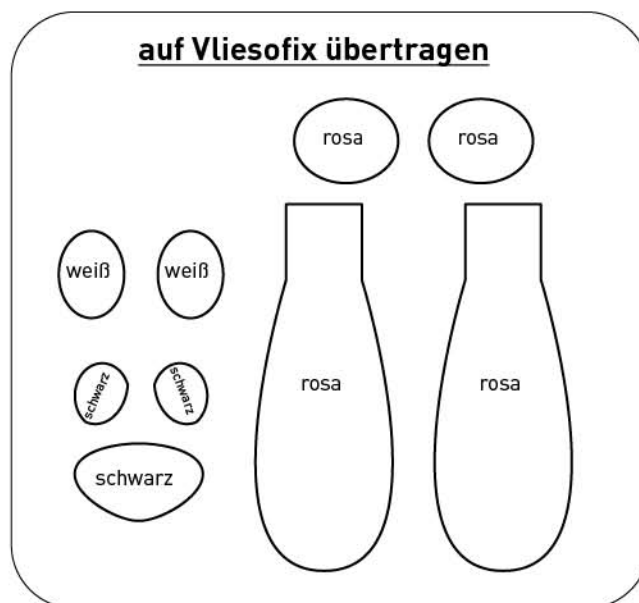


## Hase



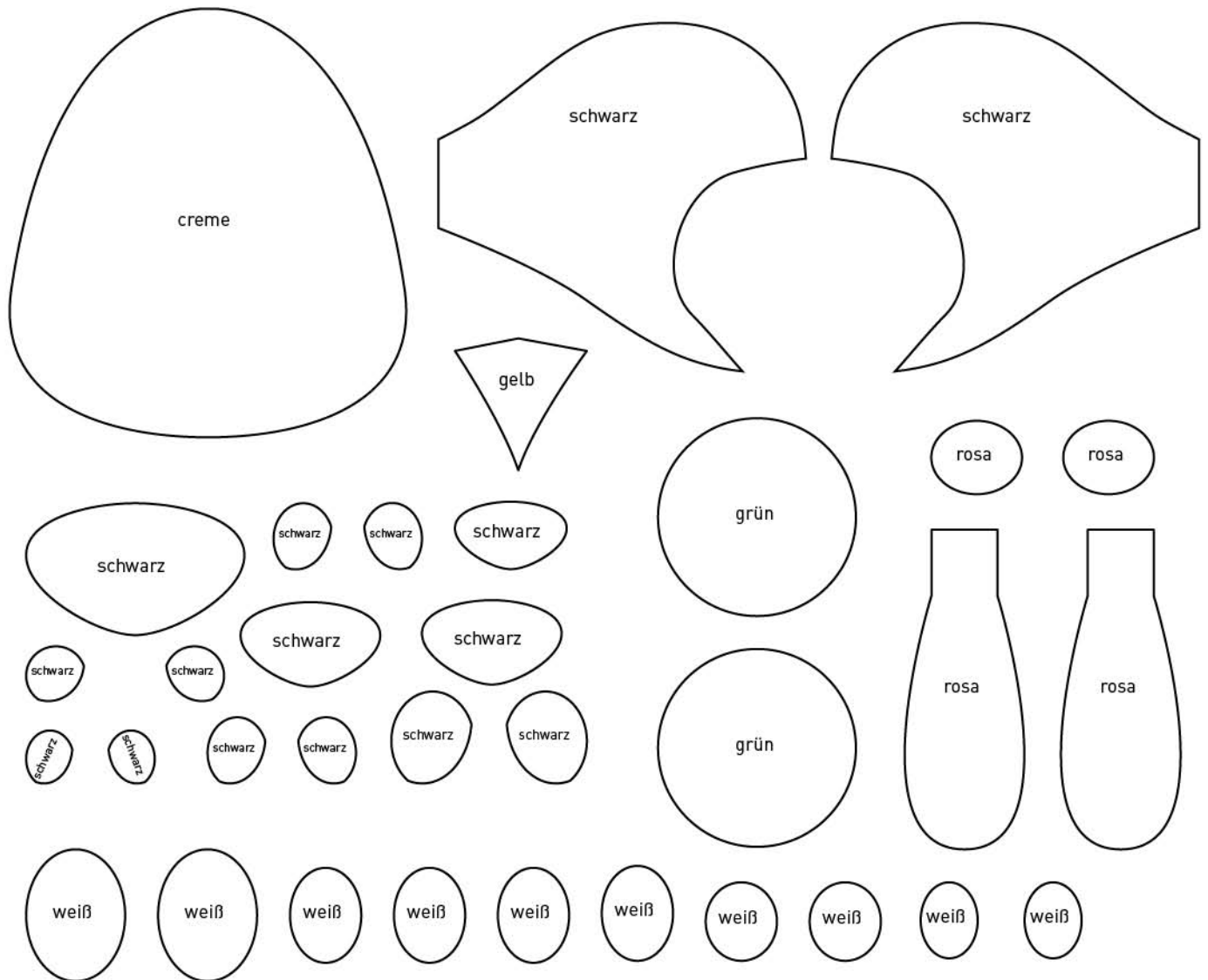
Für Ohren  
Rechtecke  
ca. 5 cm x 8 cm  
zuschneiden

## Applikationen für Hase

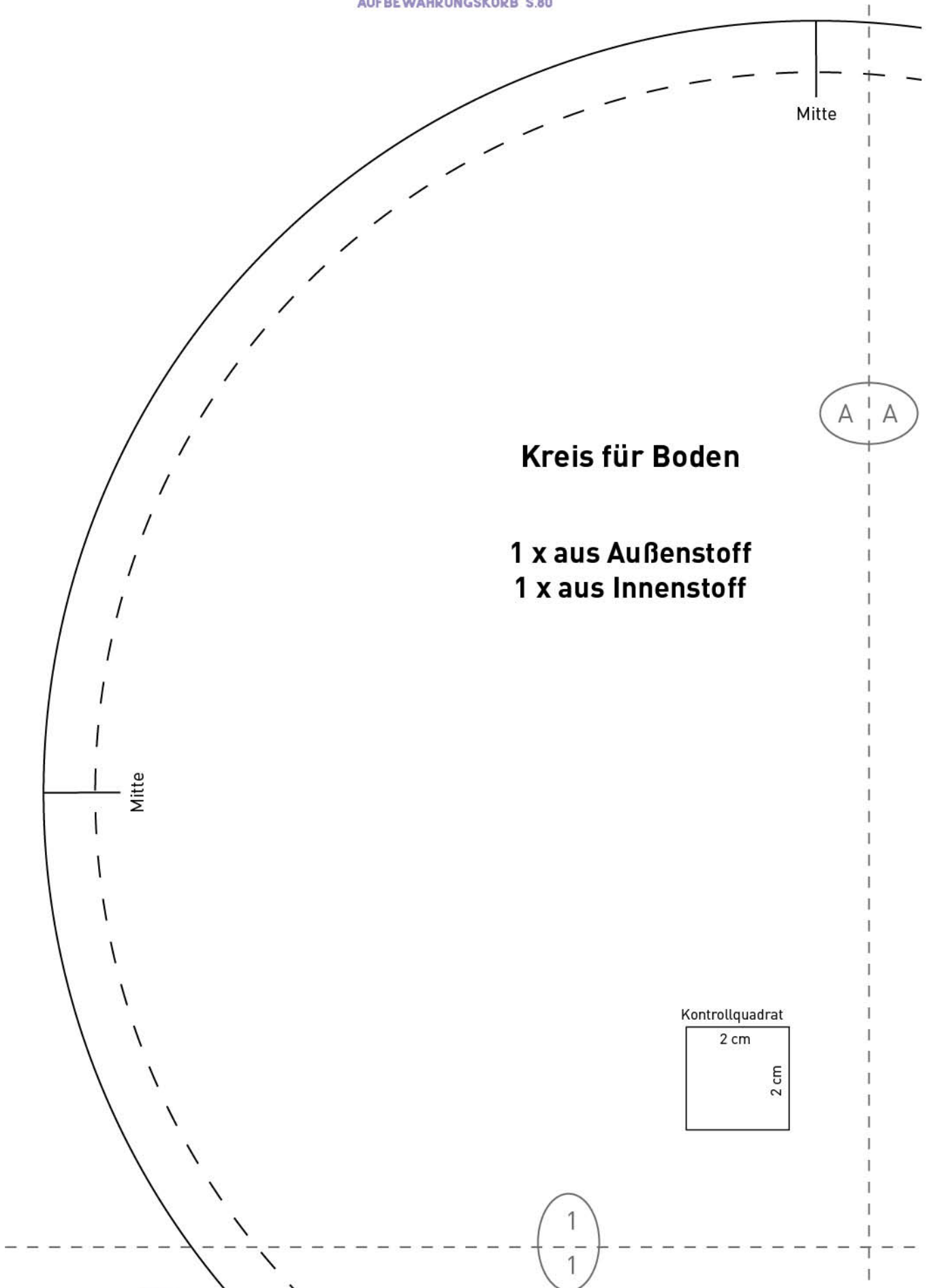


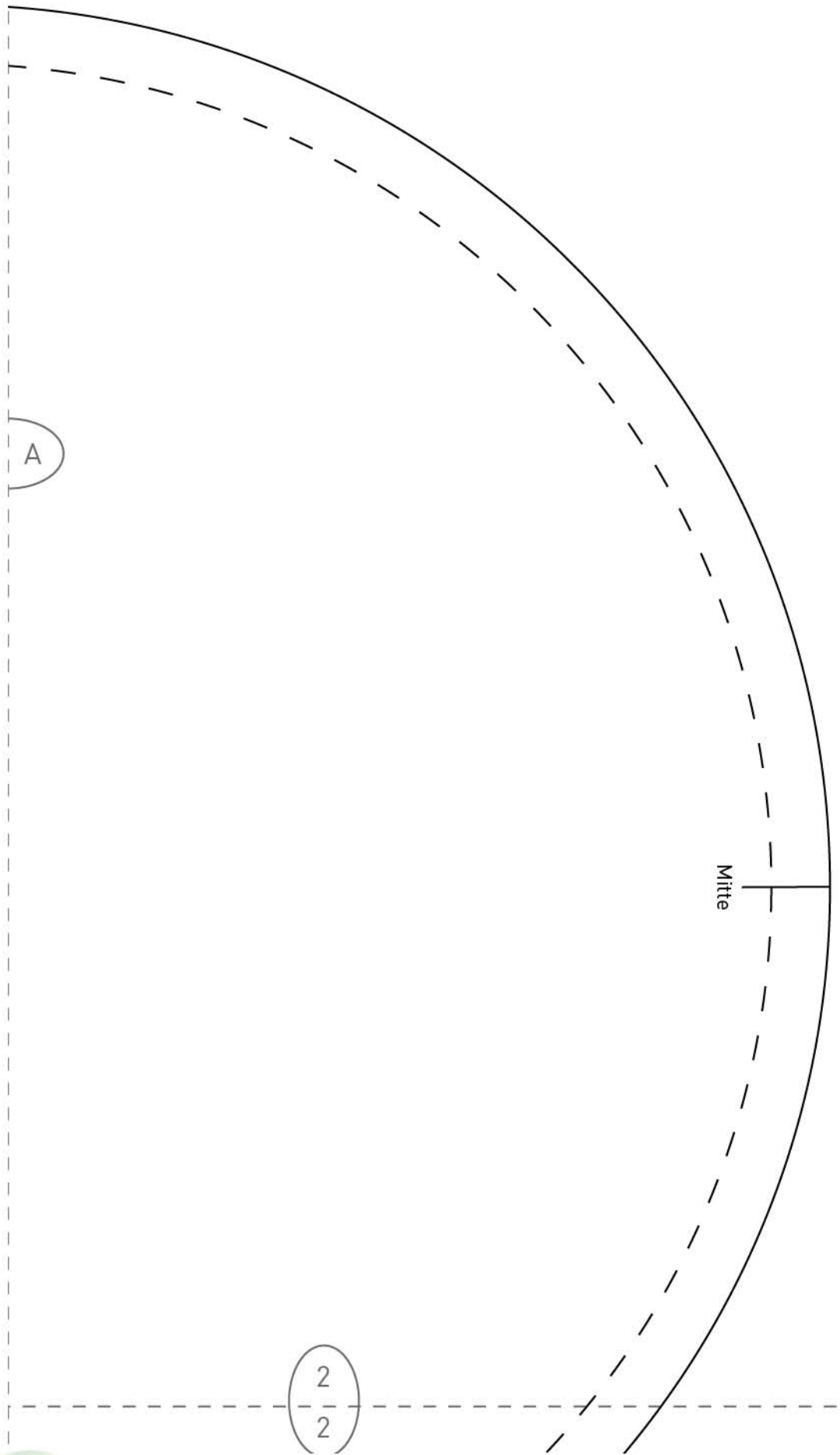
# Applikationen für alle

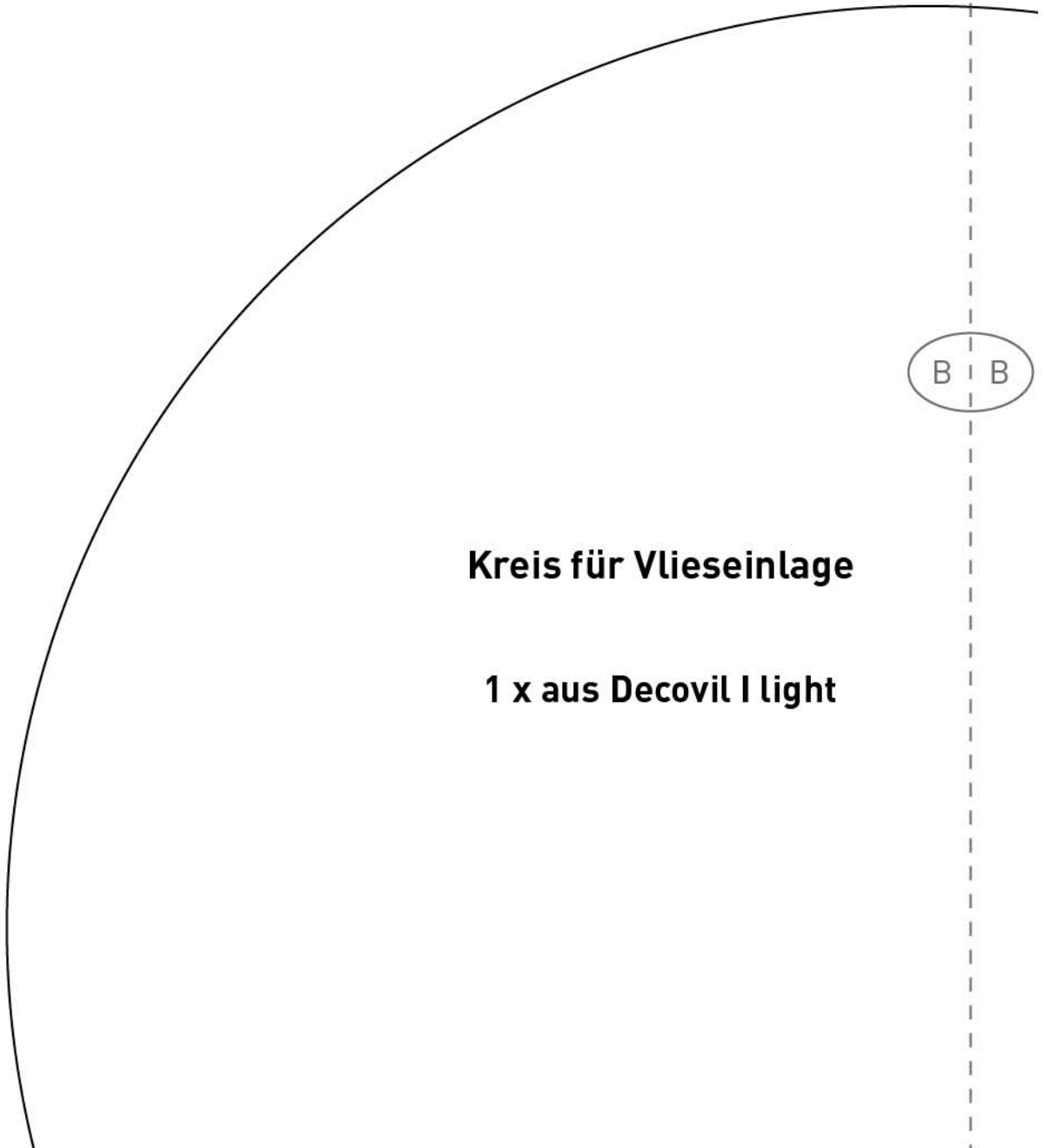
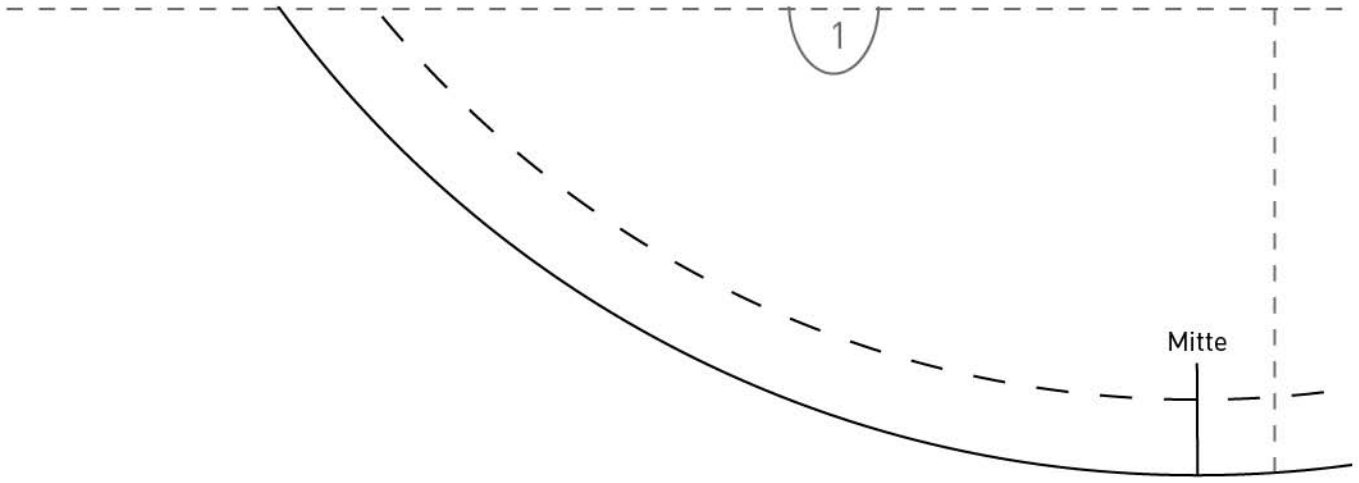
auf Vliesofix übertragen





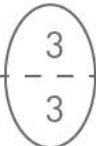


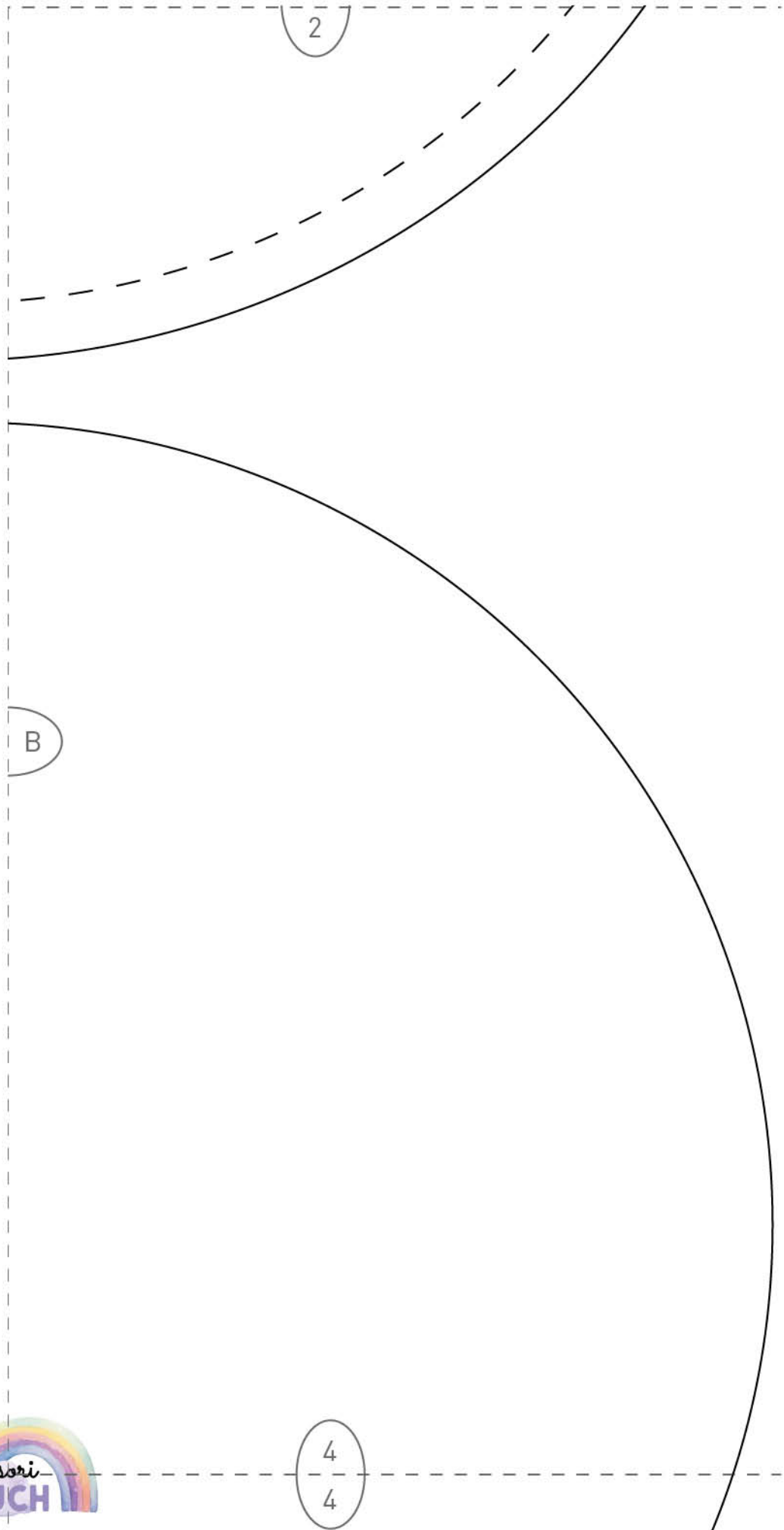


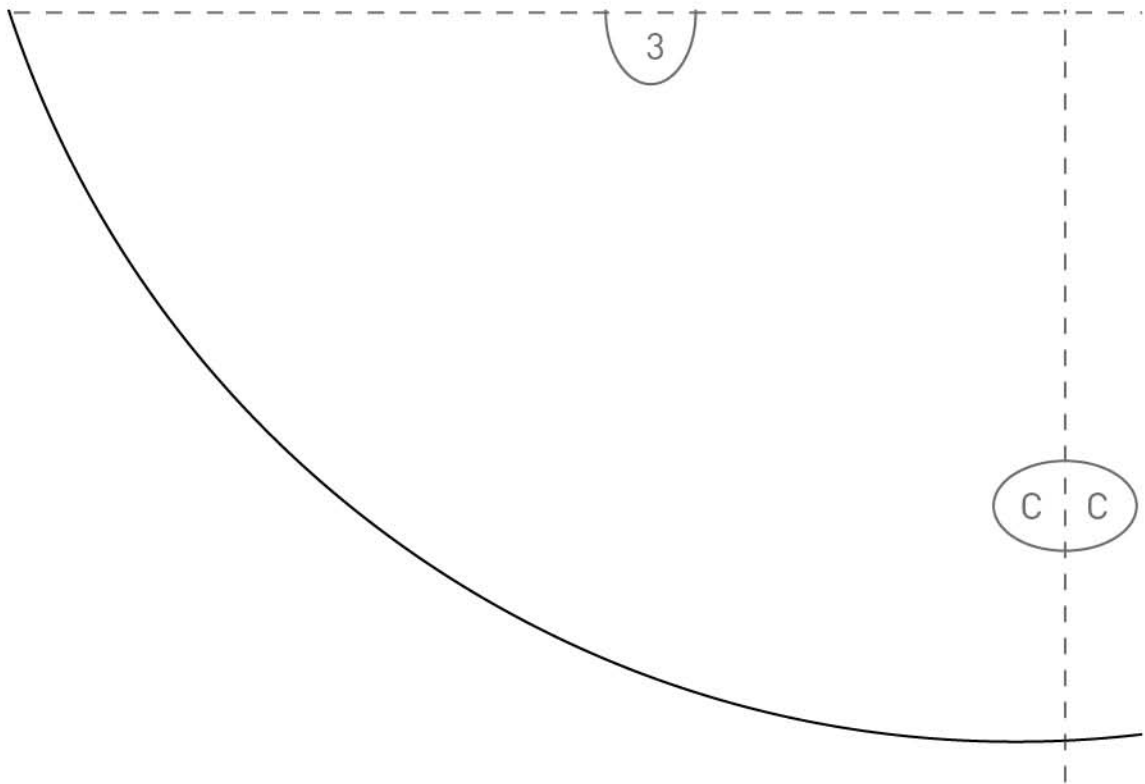


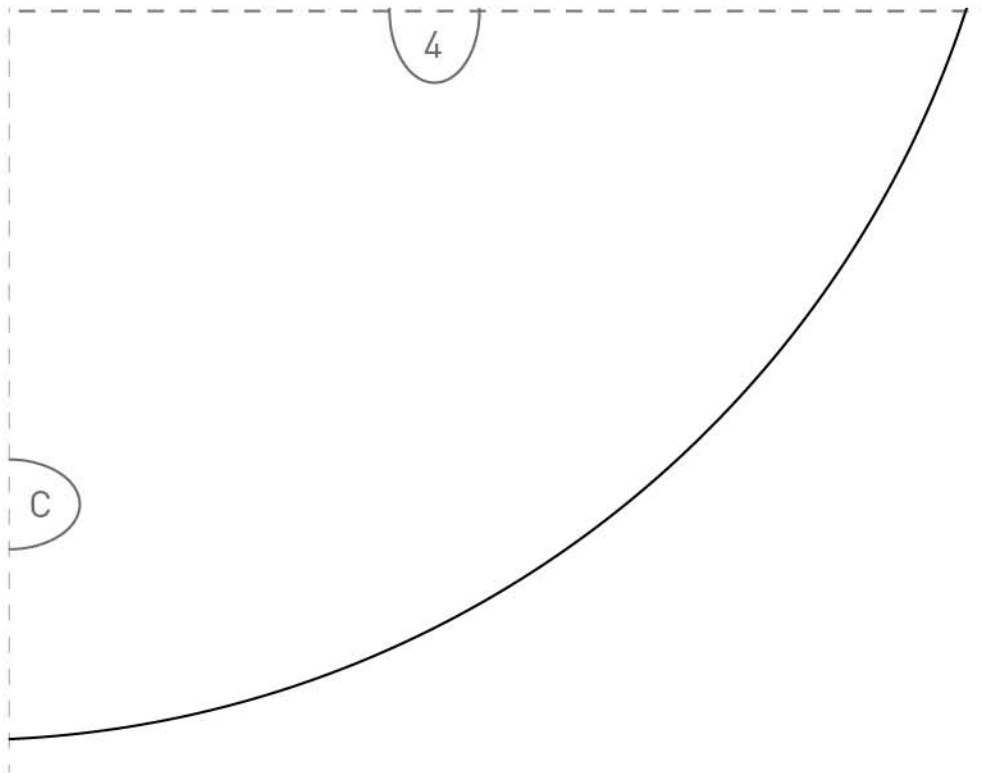
**Kreis für Vlieseinlage**

**1 x aus Decovil I light**



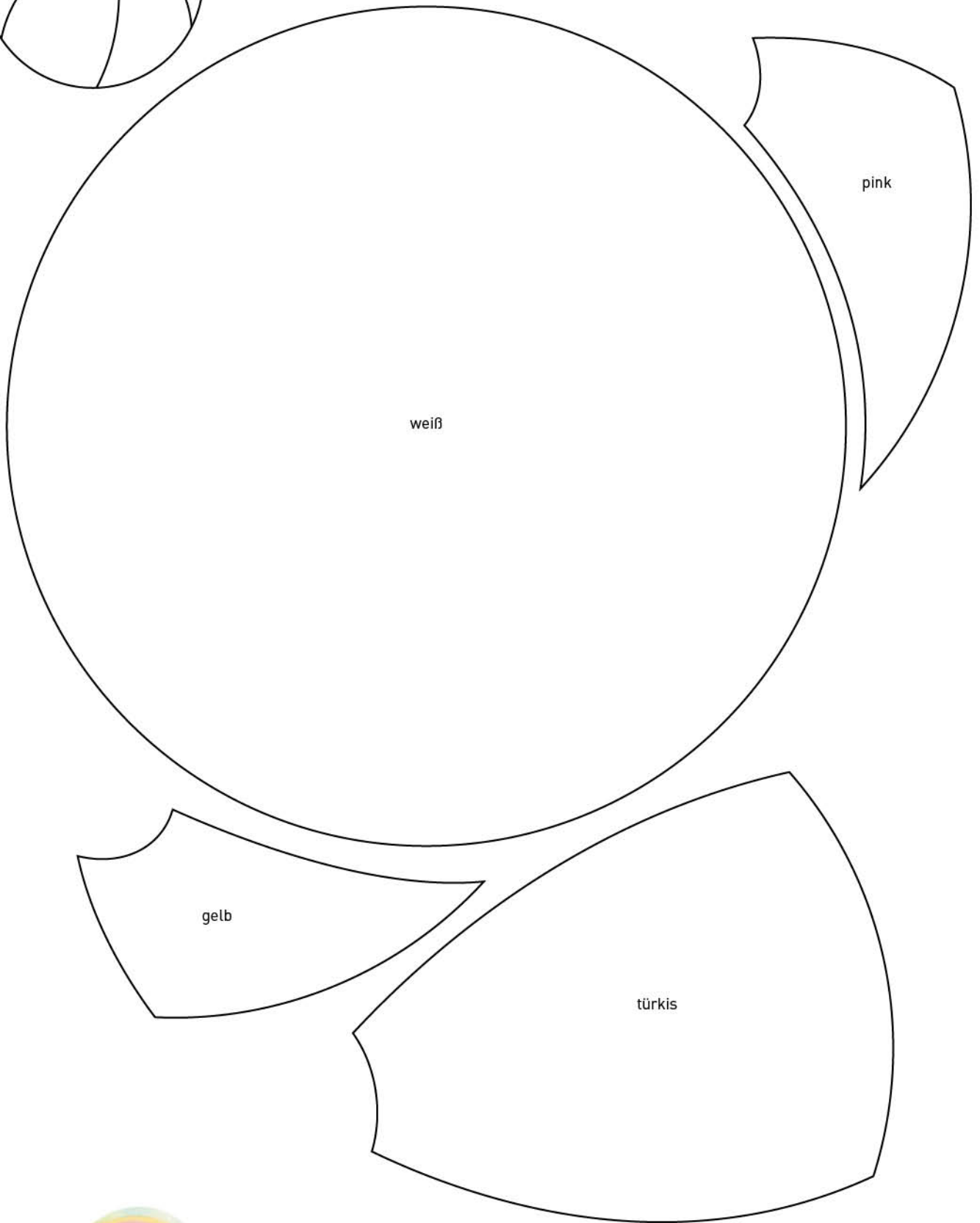
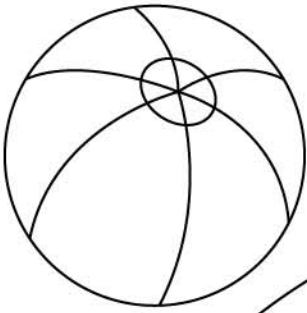




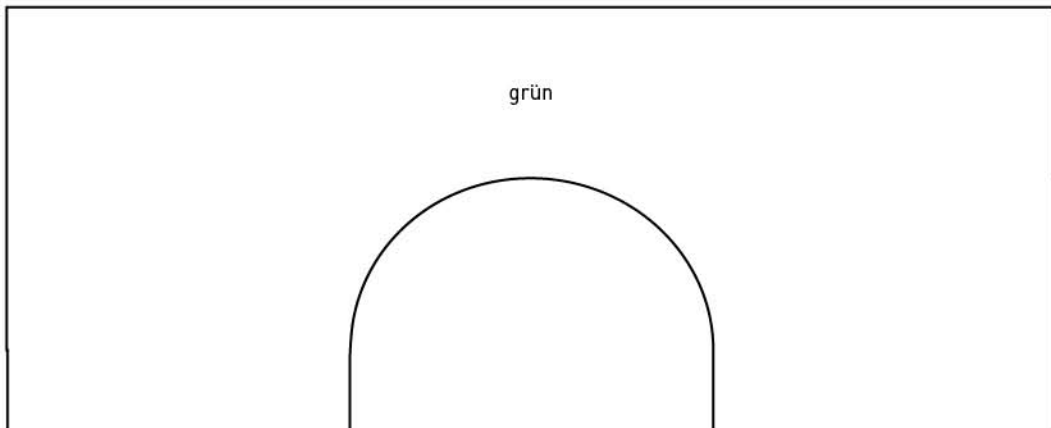
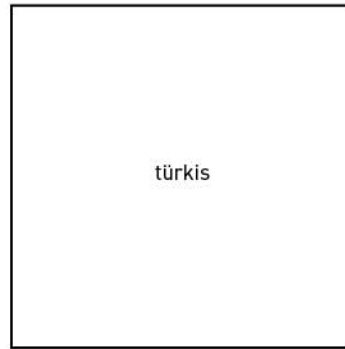
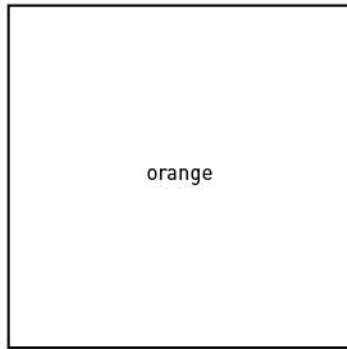
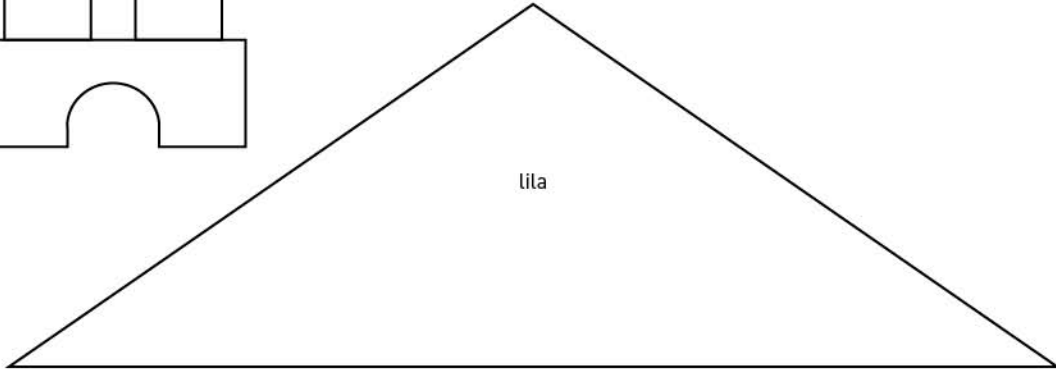
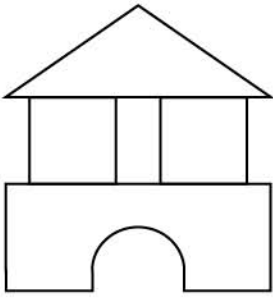


# Applikation Ball

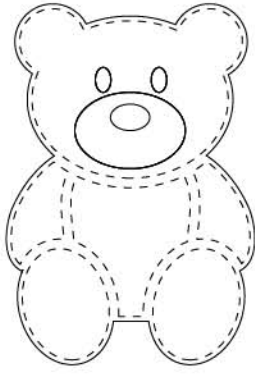
auf Vliesofix übertragen



## Applikation Bausteine auf Vliesofix übertragen

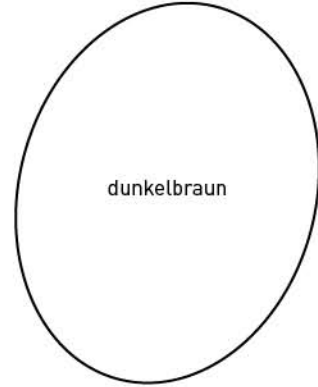
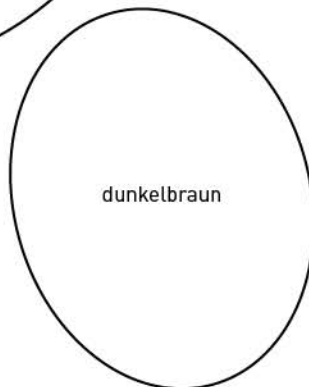
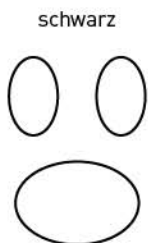
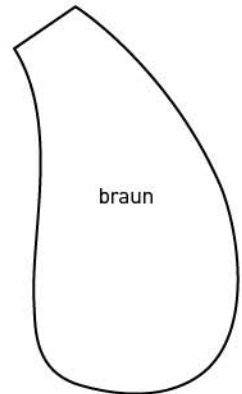
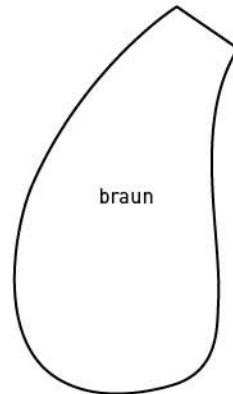
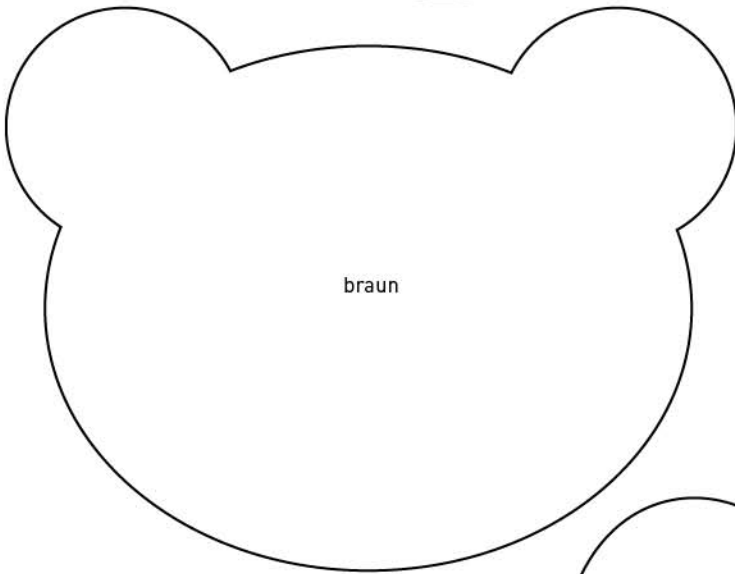
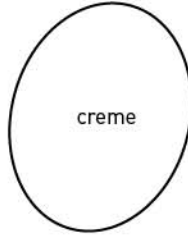
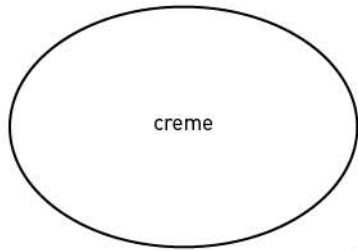
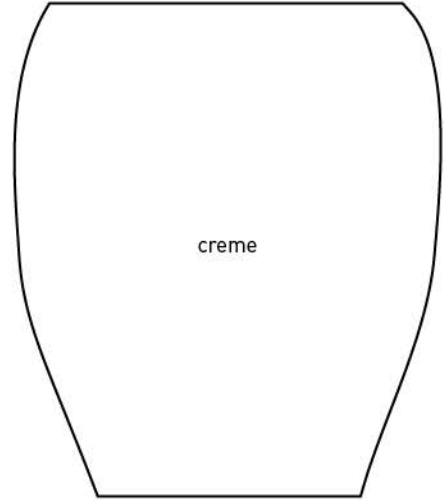
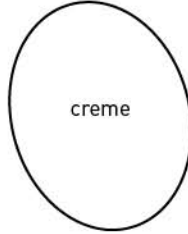
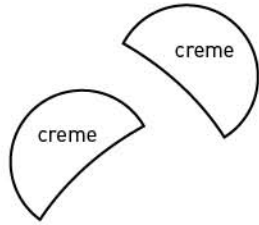




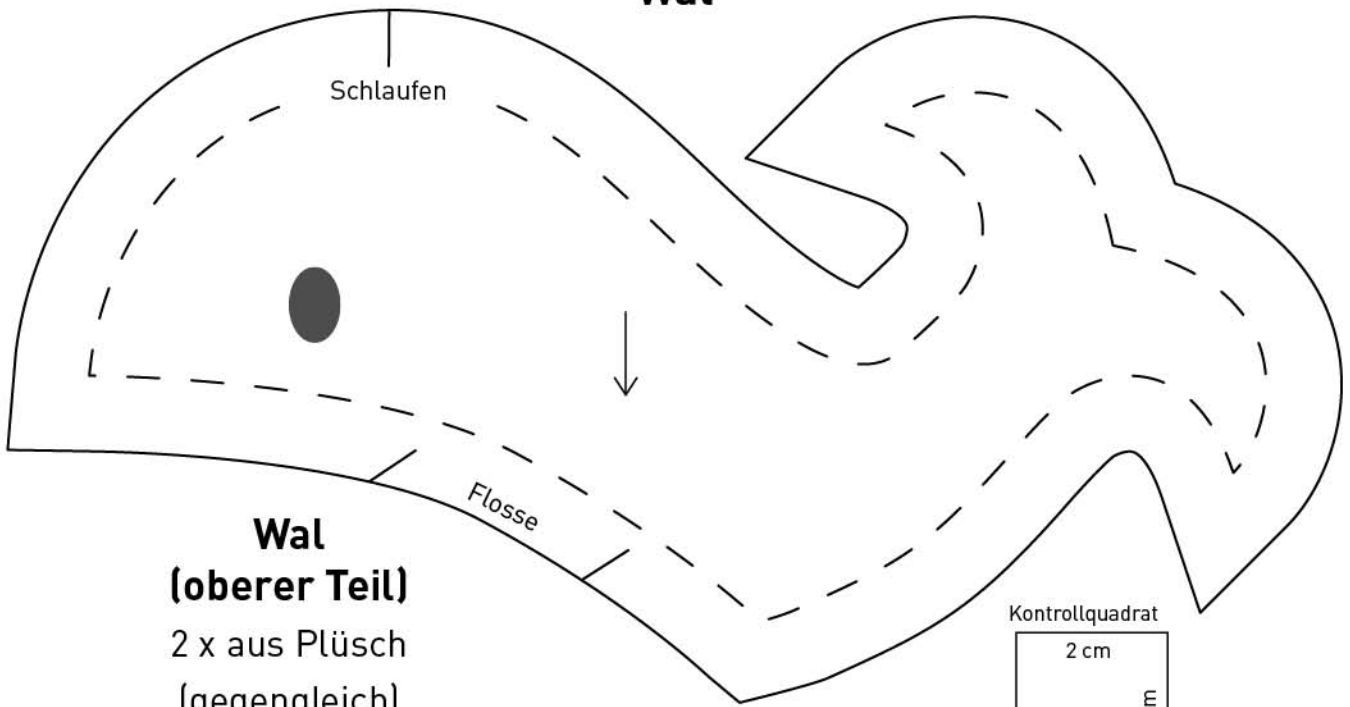


## Applikation Teddy

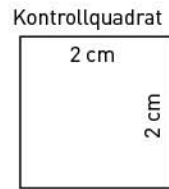
auf Vliesofix übertragen



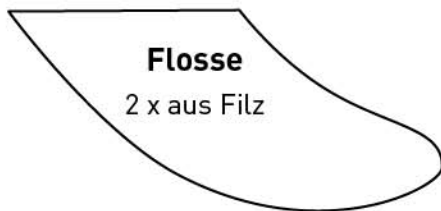
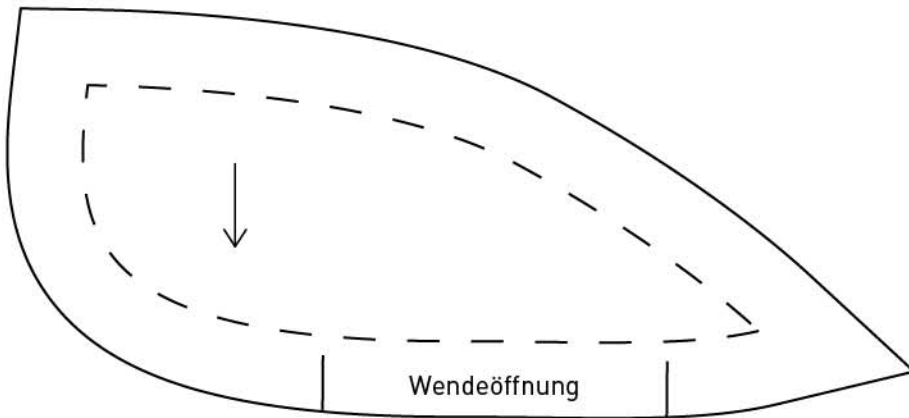
# Wal



**Wal  
(oberer Teil)**  
2 x aus Plüsch  
(gegengleich)



**Wal  
(unterer Teil)**  
2 x aus Plüsch  
(gegengleich)



**Flosse**  
2 x aus Filz

## Applikationen für Wal

auf Vliesofix übertragen

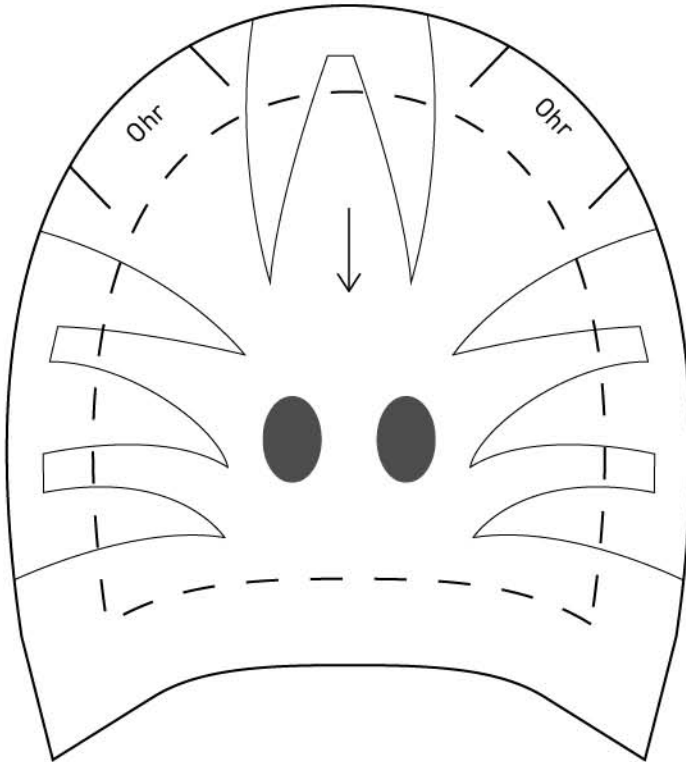
schwarz



## Zebra

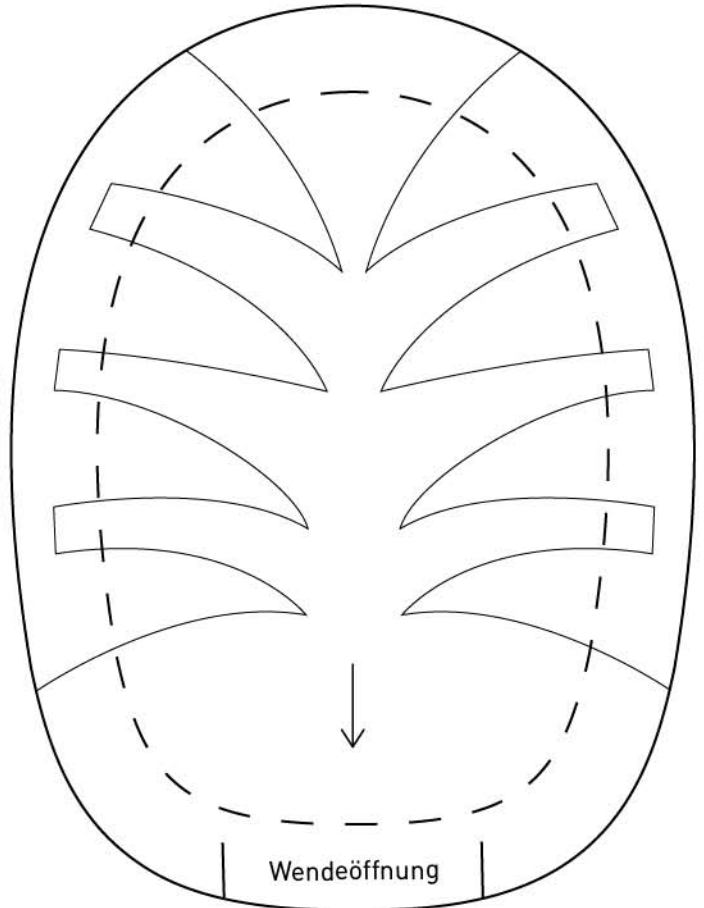
### Zebra (oberer Teil)

1 x aus Plüsch



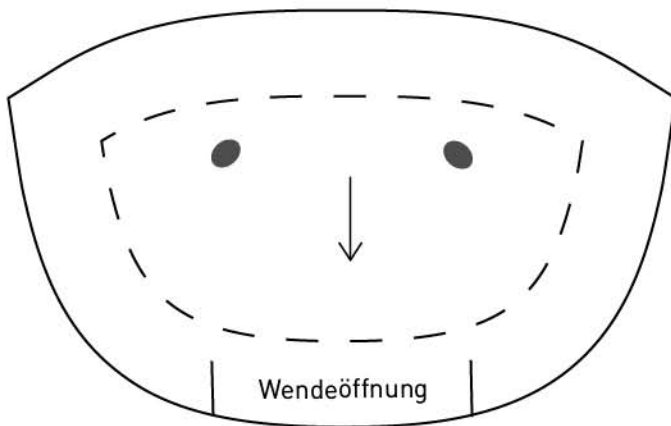
### Zebra (Rückseite)

1 x aus Plüsch



### Zebra (unterer Teil)

1 x aus Plüsch



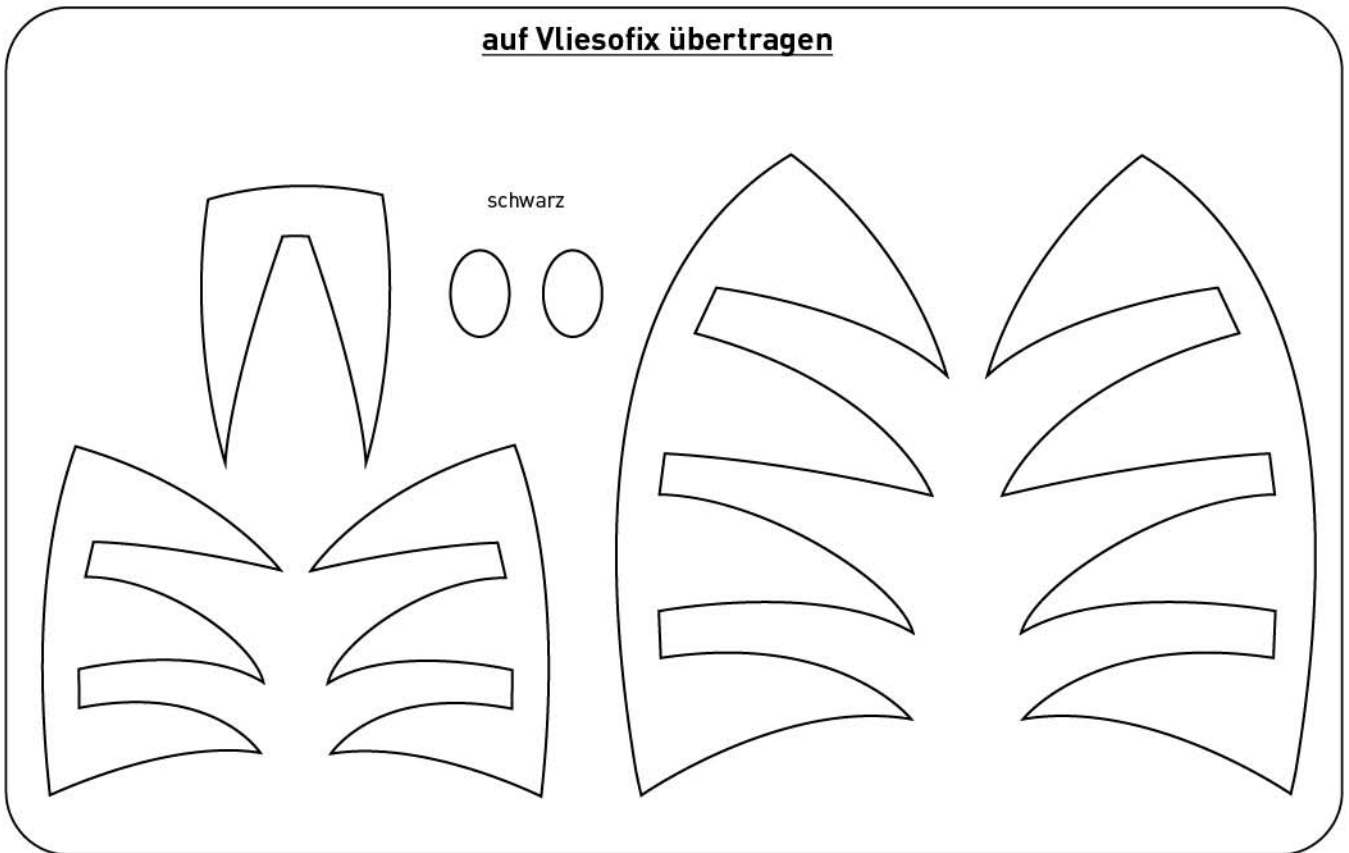
Ohr

4 x  
aus  
Plüsch

Für Ohren  
Rechtecke  
ca. 4 cm x 6 cm  
zuschneiden

## Applikationen für Zebra

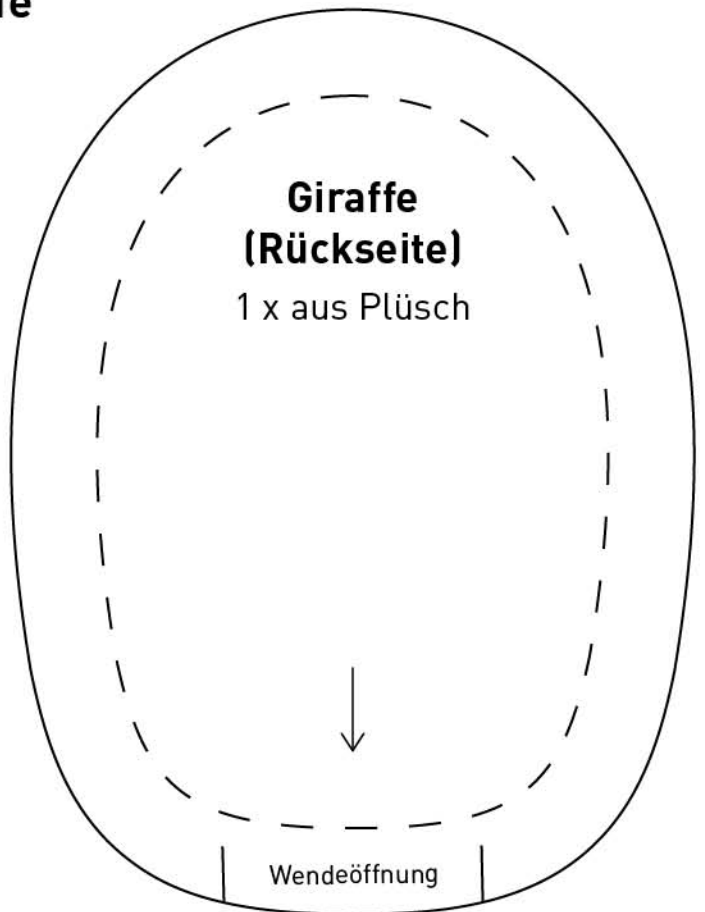
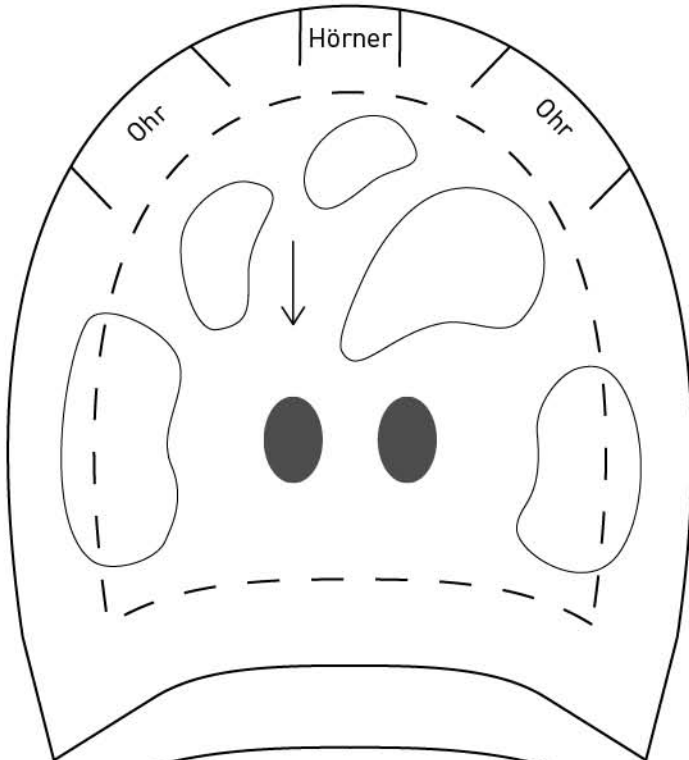
auf Vliesofix übertragen



# Giraffe

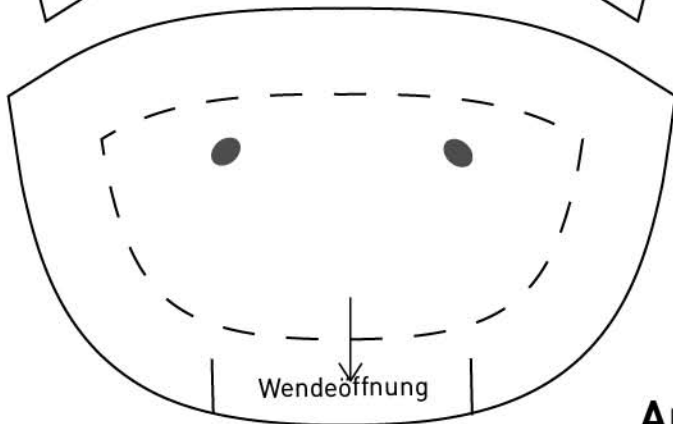
## Giraffe (oberer Teil)

1 x aus Plüsch



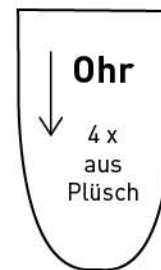
## Giraffe (Rückseite)

1 x aus Plüsch



## Giraffe (unterer Teil)

1 x aus Plüsch



Für Ohren  
Rechtecke  
ca. 4 cm x 6 cm  
zuschneiden

## Applikationen für Giraffe

auf Vliesofix übertragen

